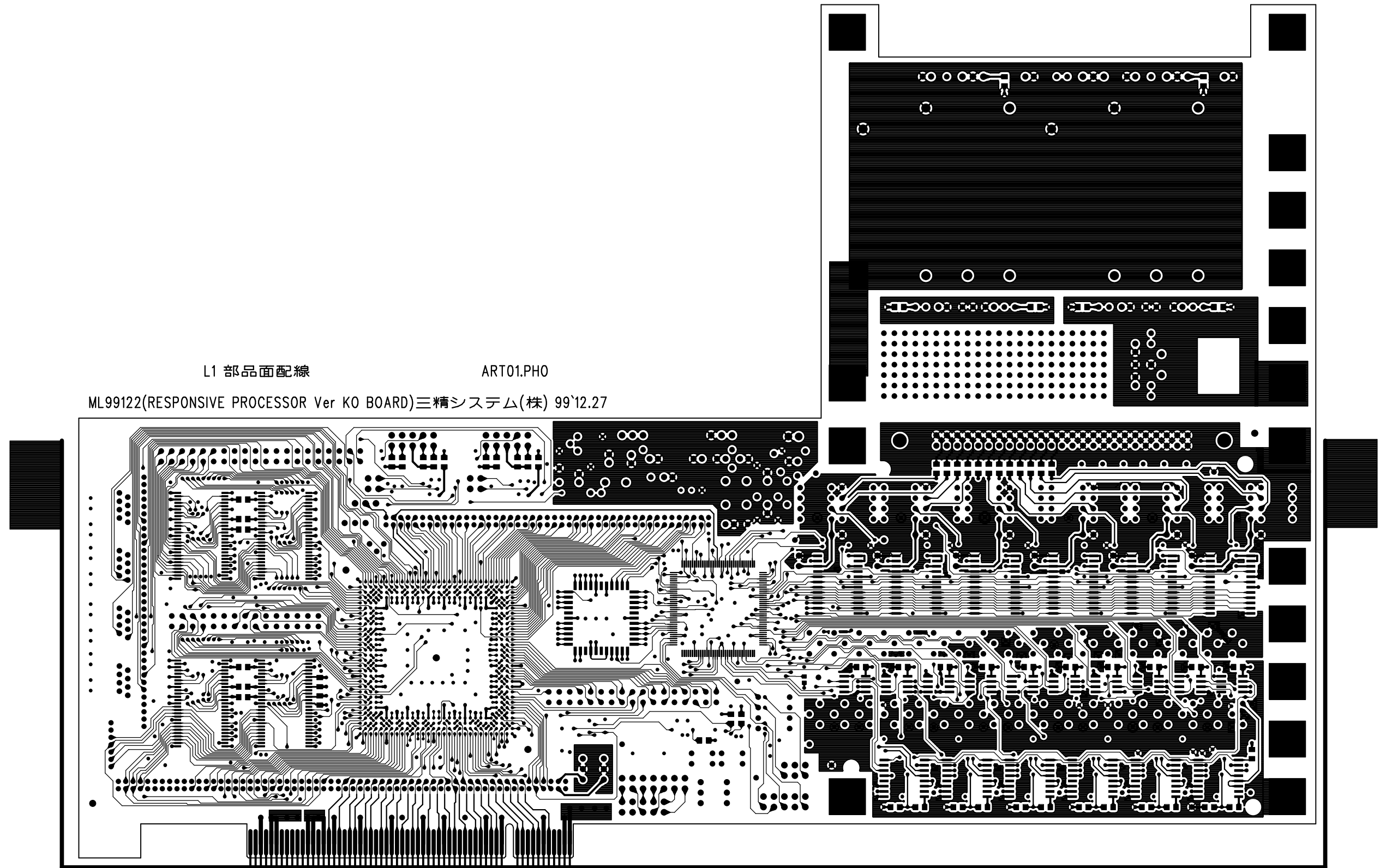


L1 部品面配線

ART01.PHO

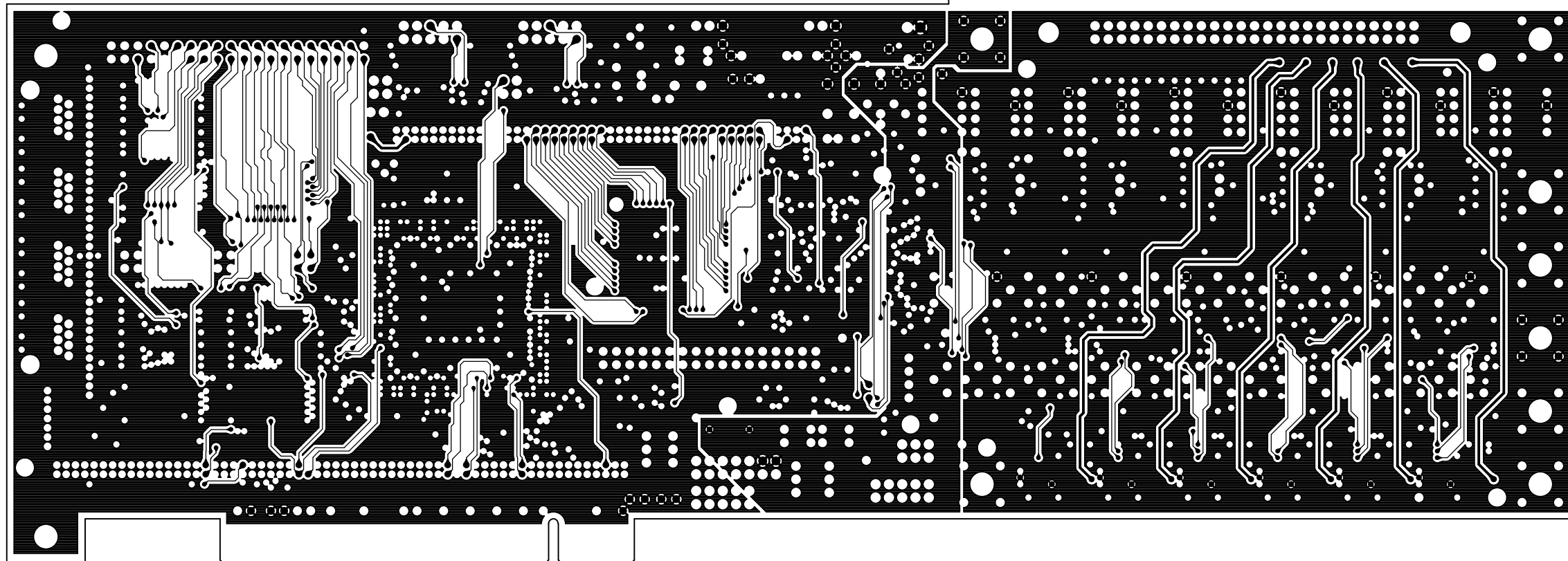
ML99122(RESPONSIVE PROCESSOR Ver K0 BOARD)三精システム(株) 99'12.27



L2 内層電源(VCC5V)

ART02.PHO

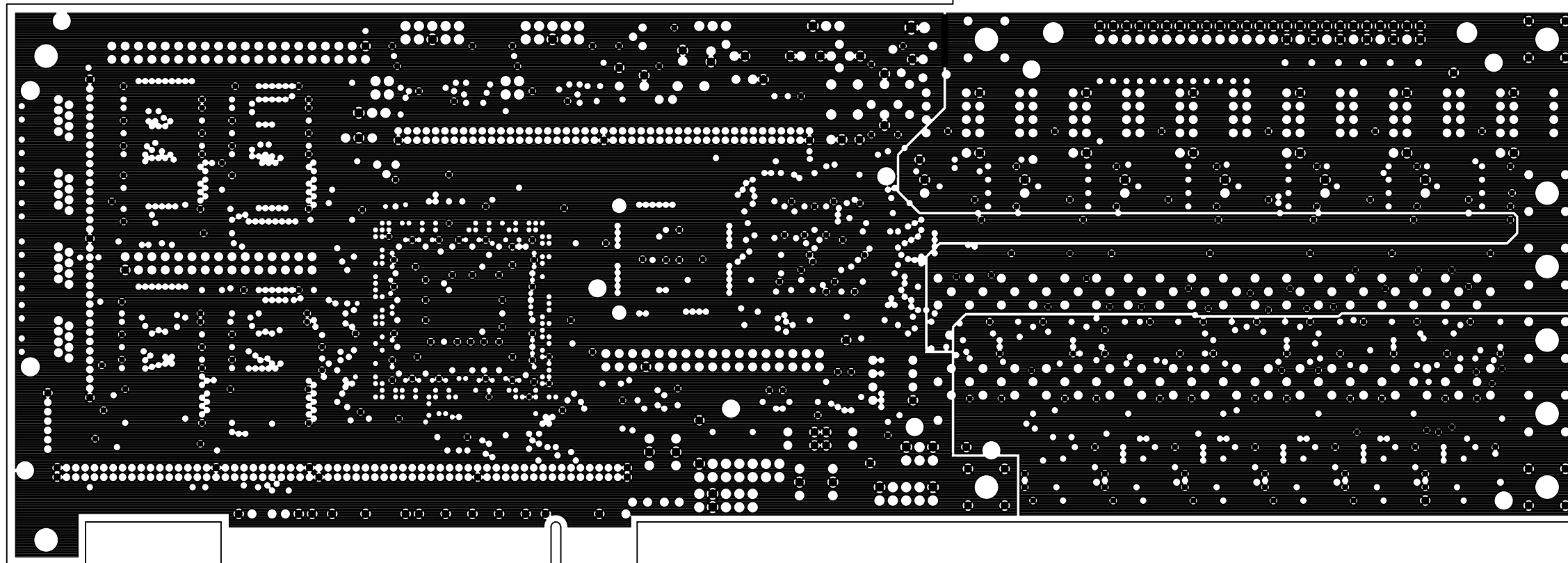
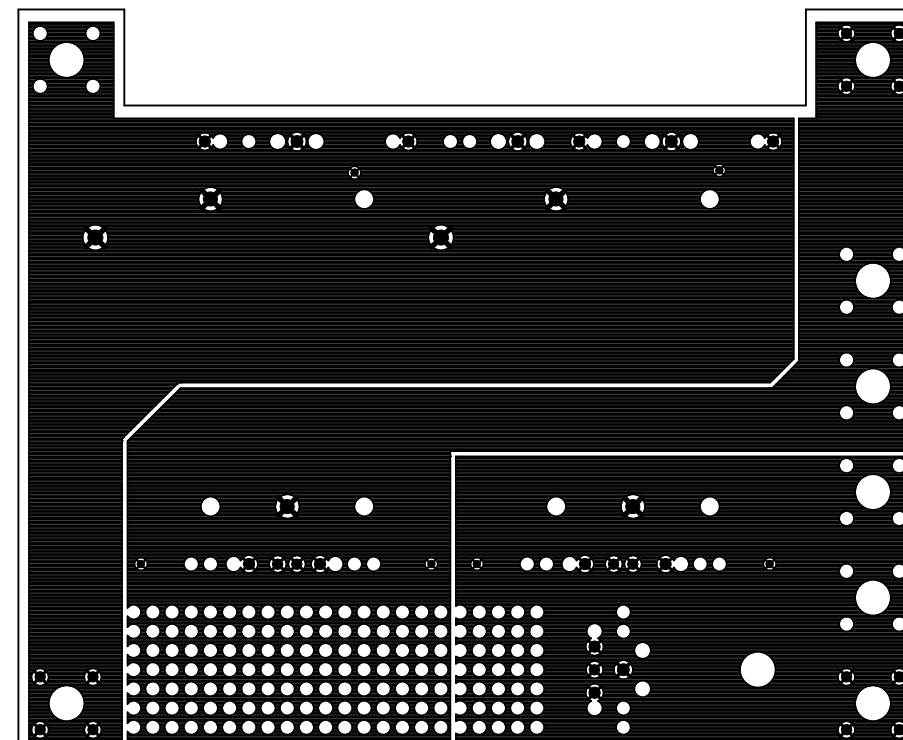
ML99122(RESPONSIVE PROCESSOR Ver K0 BOARD)三精システム(株) 99'12.27



L3 内層電源(GND)

ART03.PHO

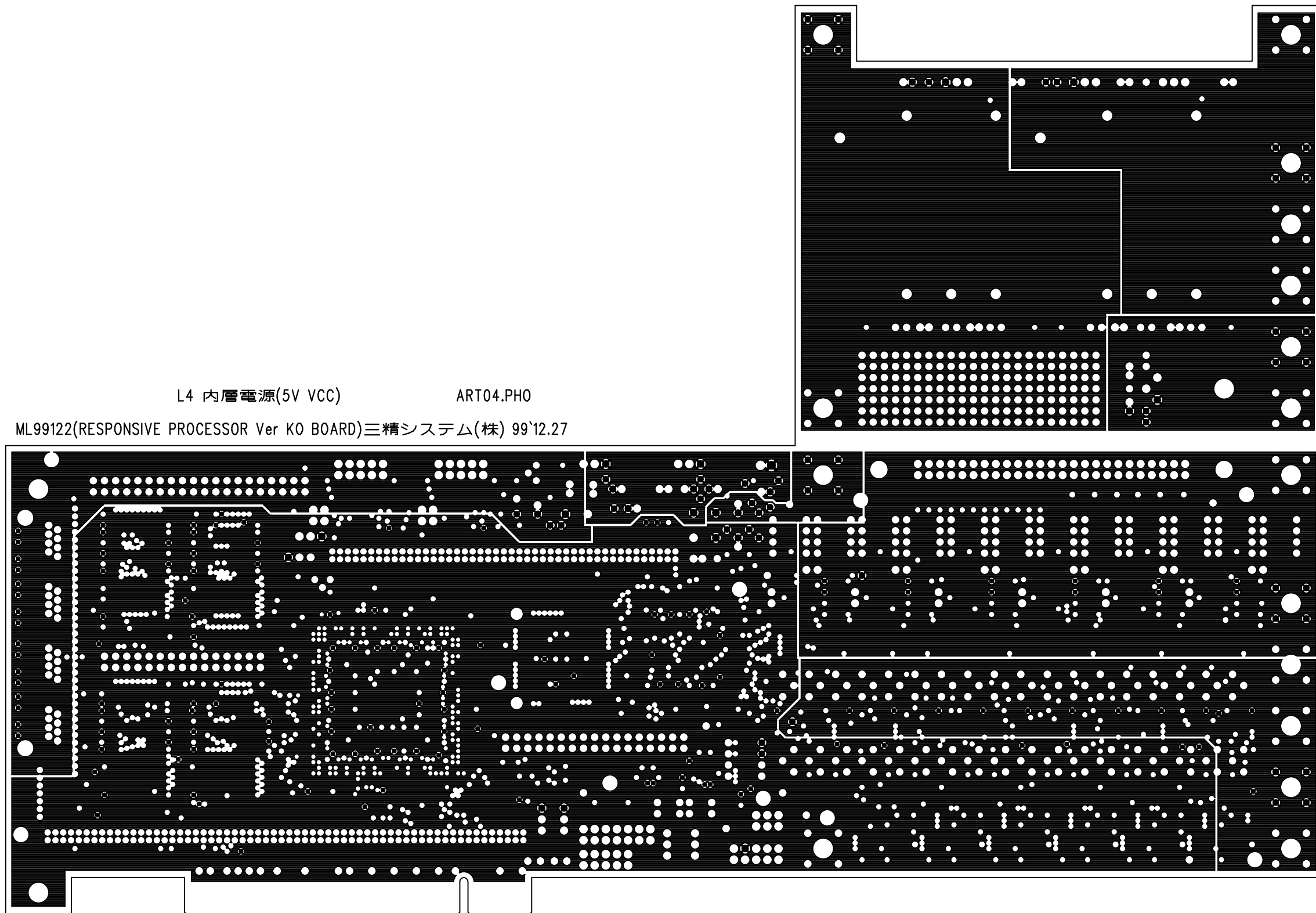
ML99122(RESPONSIVE PROCESSOR Ver K0 BOARD)三精システム(株) 99`12.27



L4 内層電源(5V VCC)

ART04.PHO

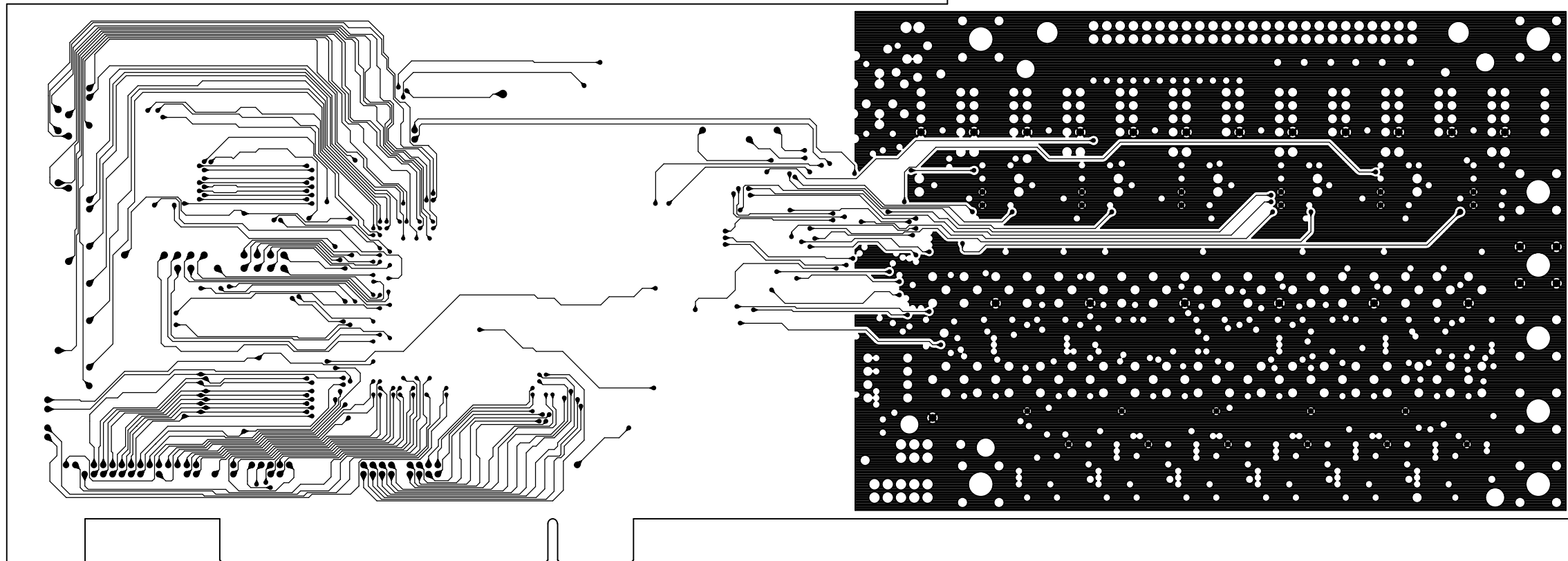
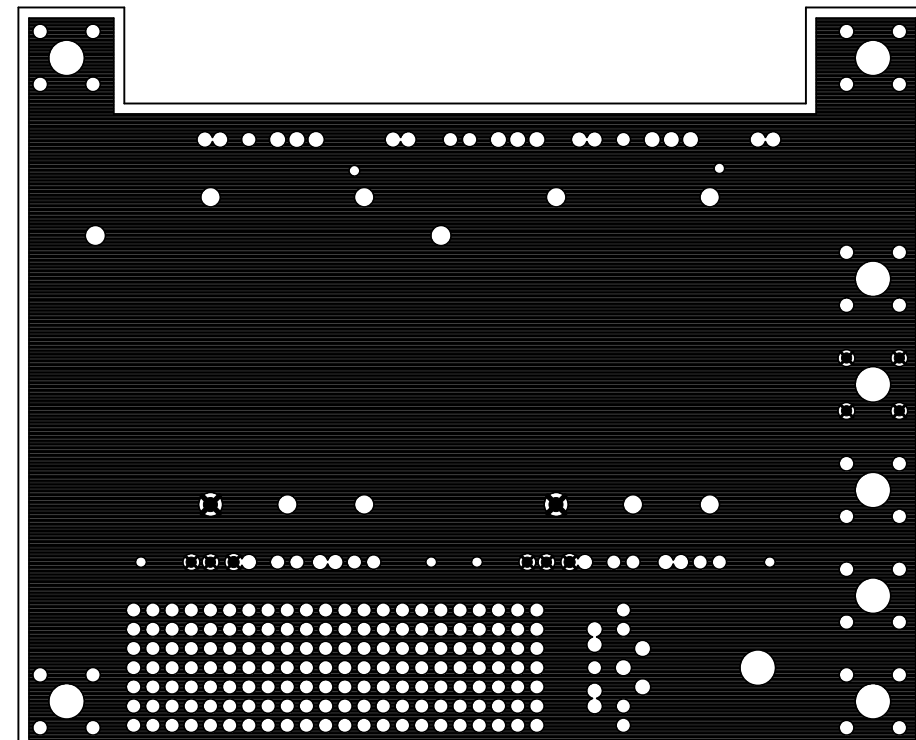
ML99122(RESPONSIVE PROCESSOR Ver K0 BOARD)三精システム(株) 99`12.27



L5 内層電源(VCC2)

ART05.PHO

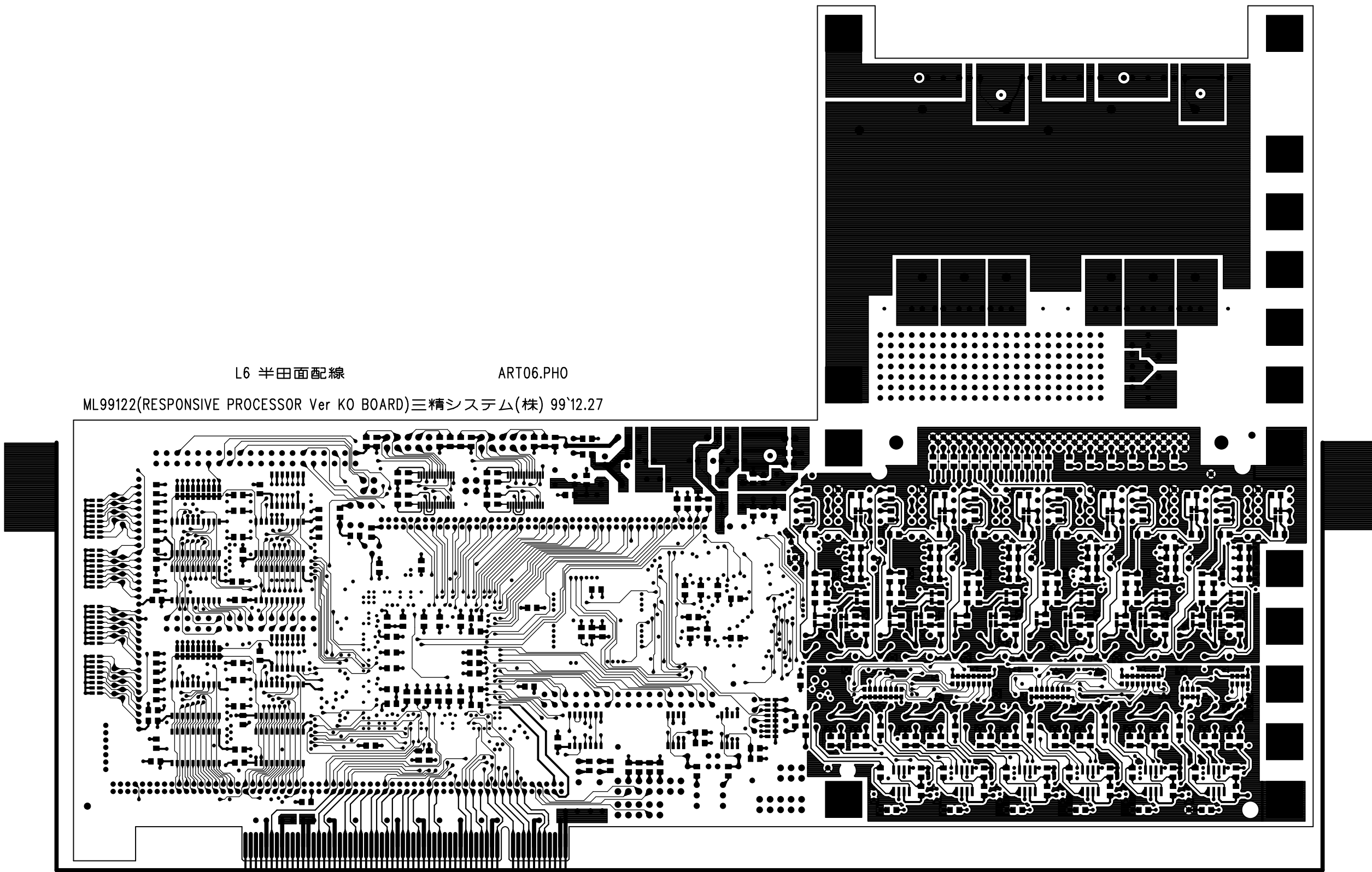
ML99122(RESPONSIVE PROCESSOR Ver K0 BOARD)三精システム(株) 99`12.27

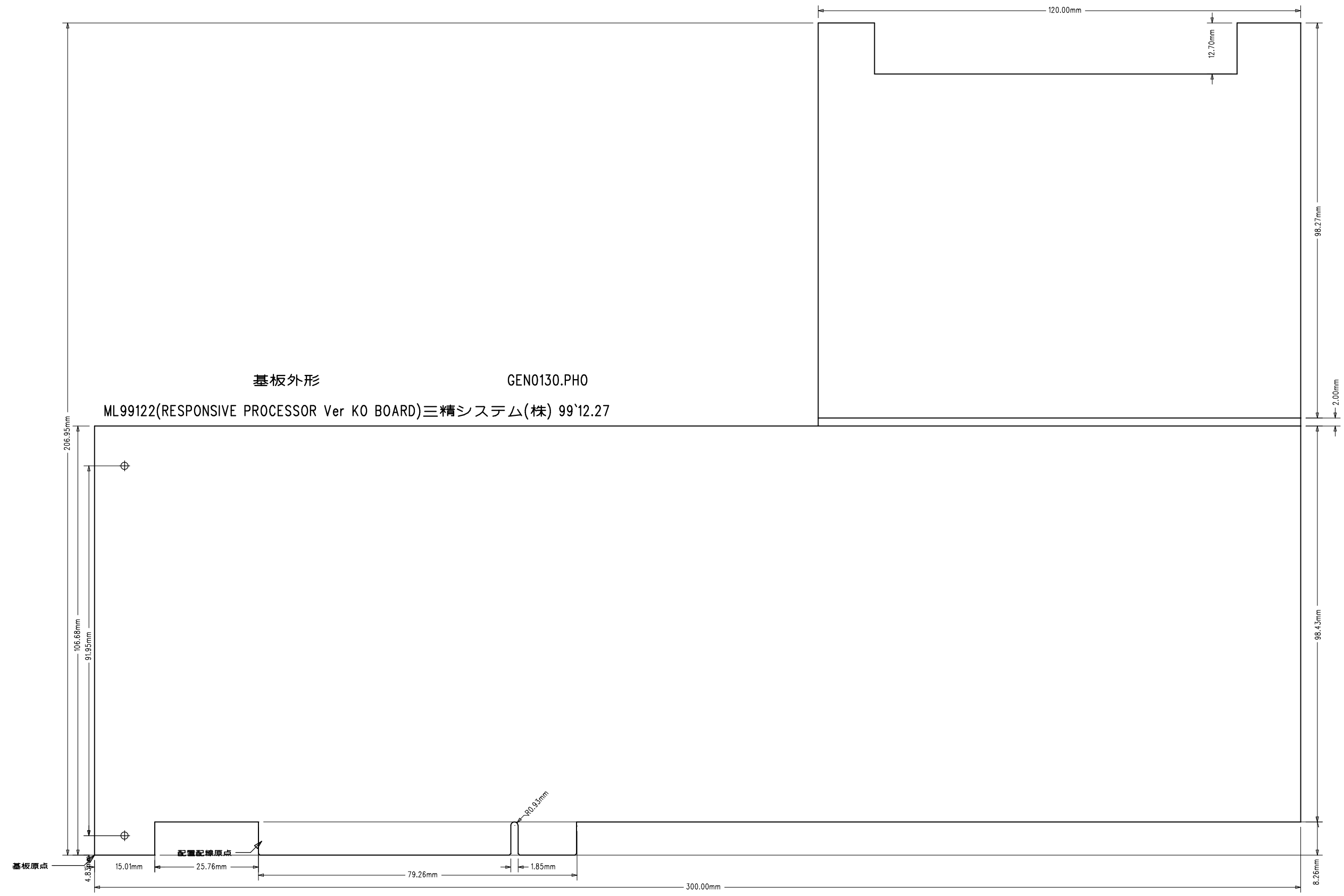


L6 半田面配線

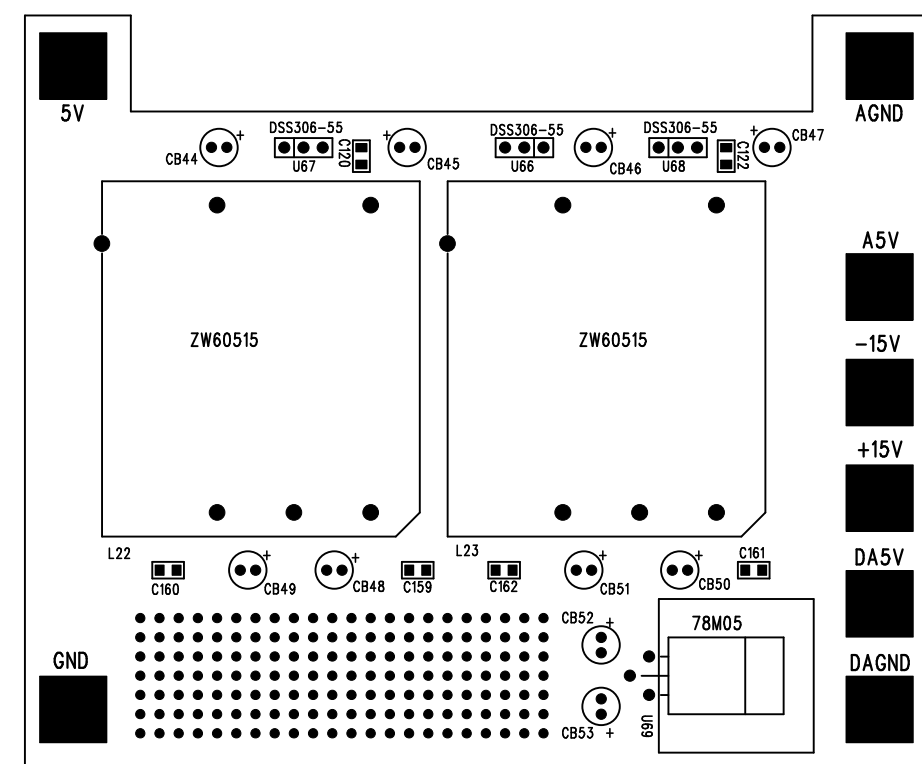
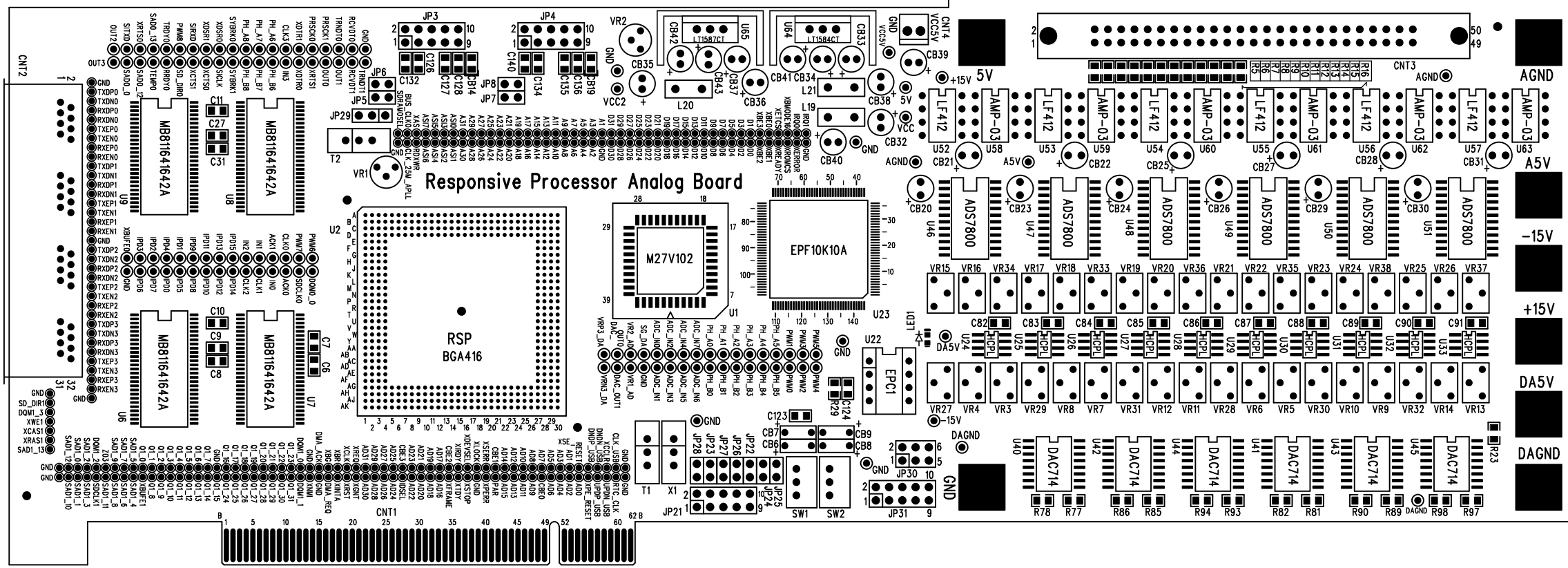
ART06.PHO

ML99122(RESPONSIVE PROCESSOR Ver K0 BOARD)三精システム(株) 99'12.27





L1 部品面シルク SST0120.PHO
 ML99122(RESPONSIVE PROCESSOR Ver KO BOARD)三精システム(株) 99'12.27



MT 9A125 (RESPONSIVE PROCESSOR Ver. KO BOARD) 三精システム(株) 99.12.22
LE 半田面シムロ

