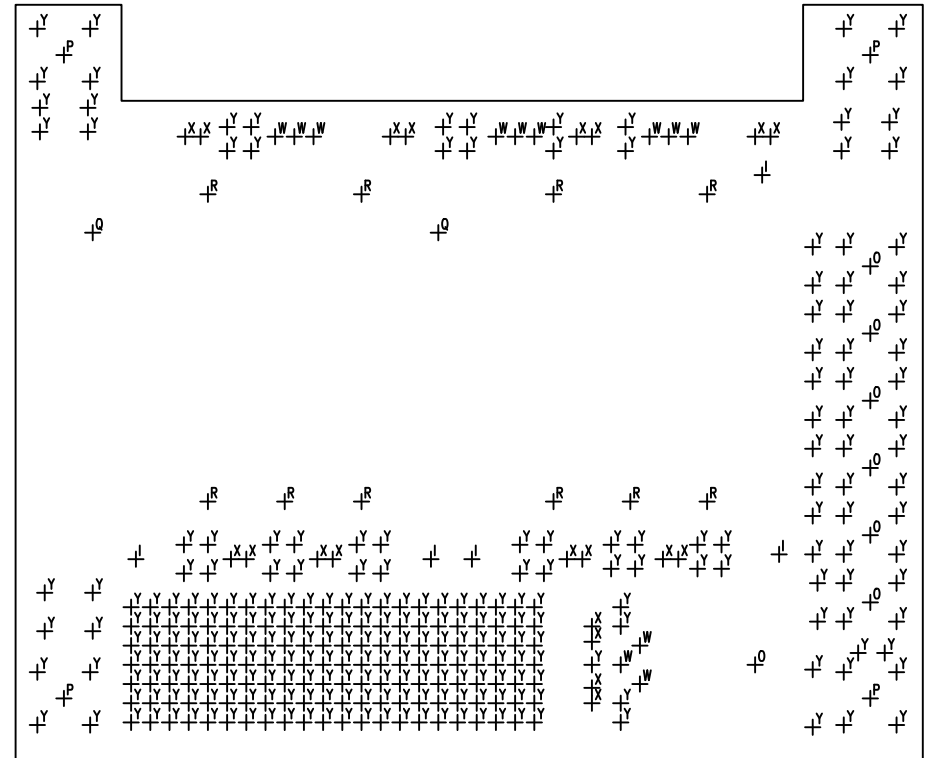
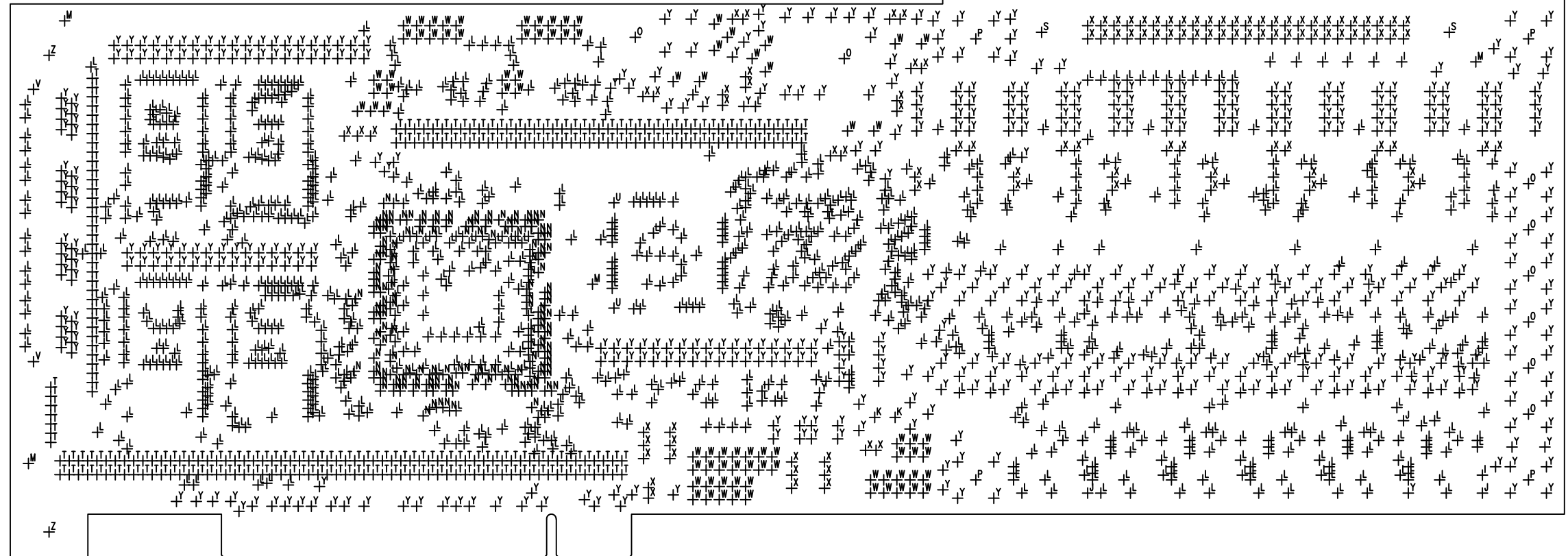


寸法	数量	記号	PLTD
24	19	I	PLTD
91	3	J	PLTD
71	2	K	PLTD
16	1095	L	PLTD
98	4	M	NPLTD
12	147	N	PLTD
126	15	O	PLTD
138	8	P	PLTD
55	2	Q	PLTD
51	10	R	PLTD
110	2	S	PLTD
28	256	T	PLTD
67	2	U	NPLTD
95	2	V	NPLTD
40	95	W	PLTD
36	129	X	PLTD
32	754	Y	PLTD
138	2	Z	NPLTD

ドリル穴指示図

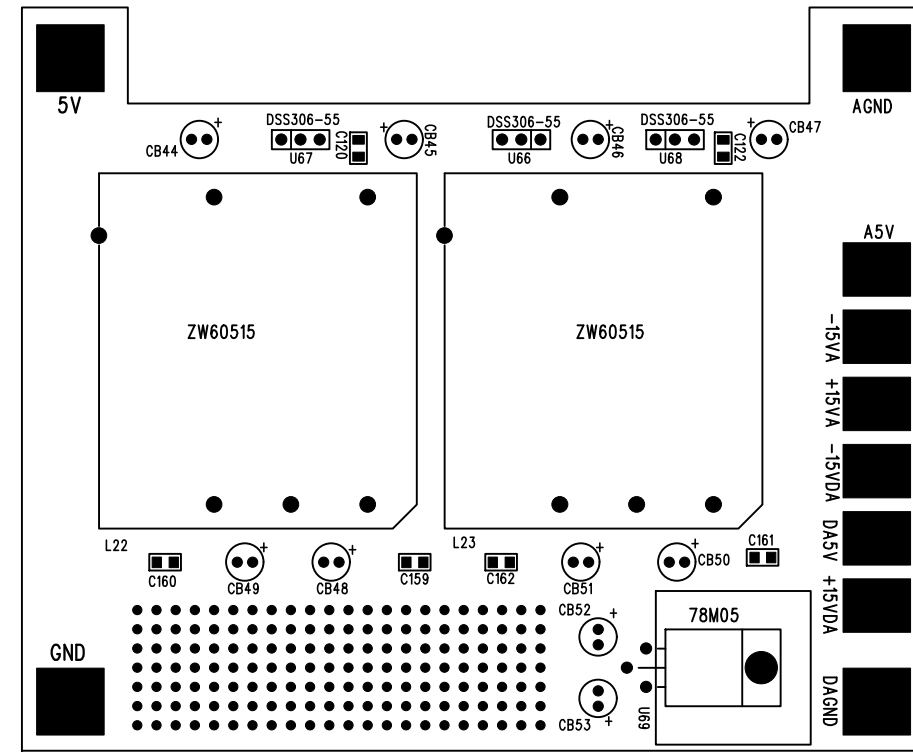
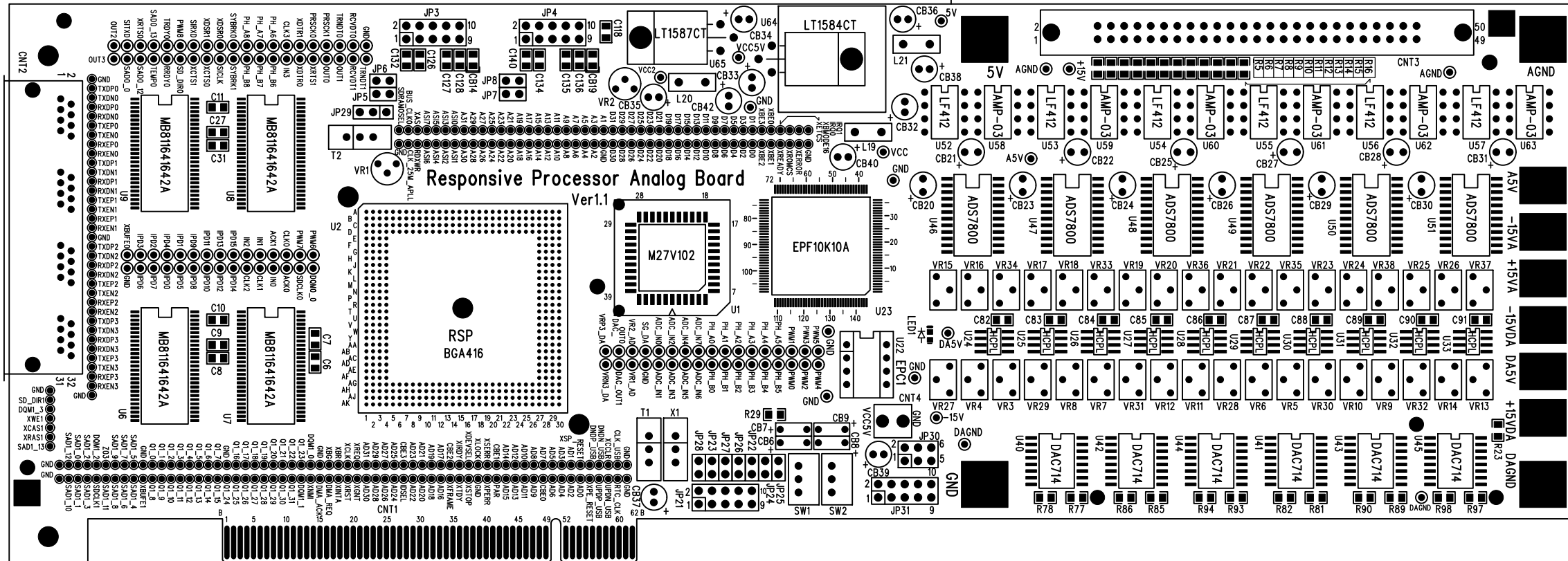
DD0129.PRN

ML00045(RESPONSIVE PROCESSOR Ver1.1 K0 BOARD)三精システム(株) 01'2.9



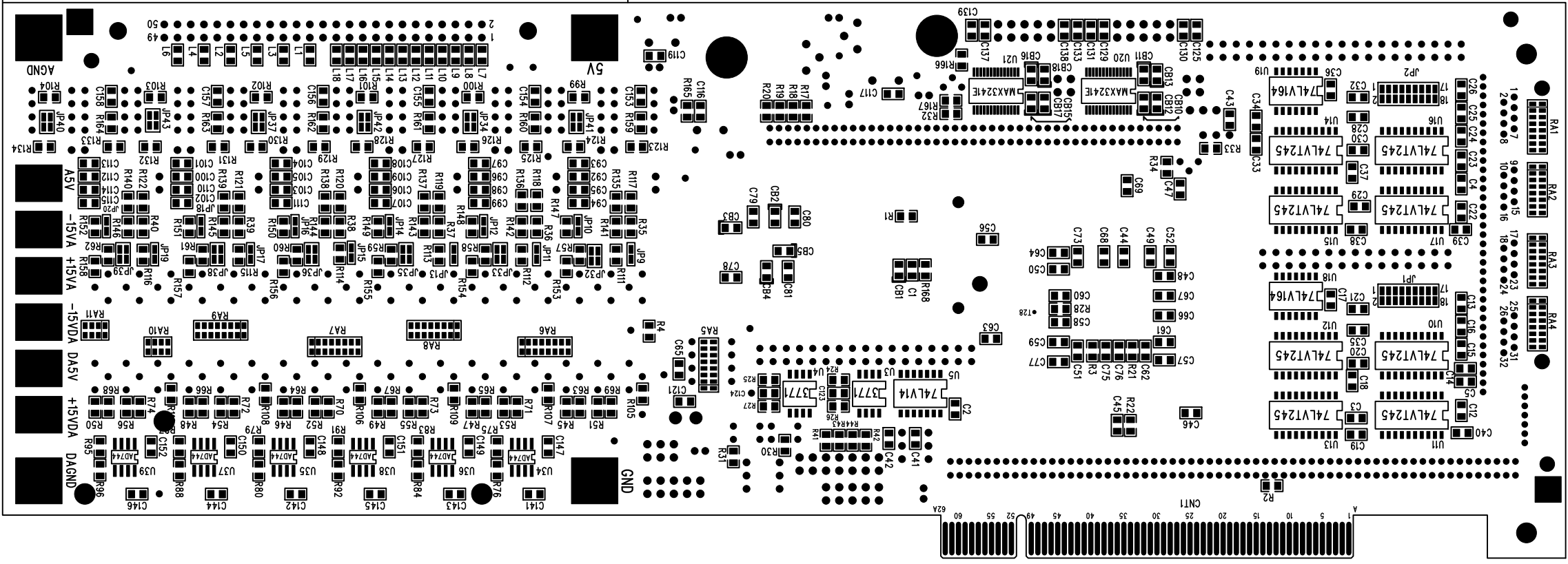
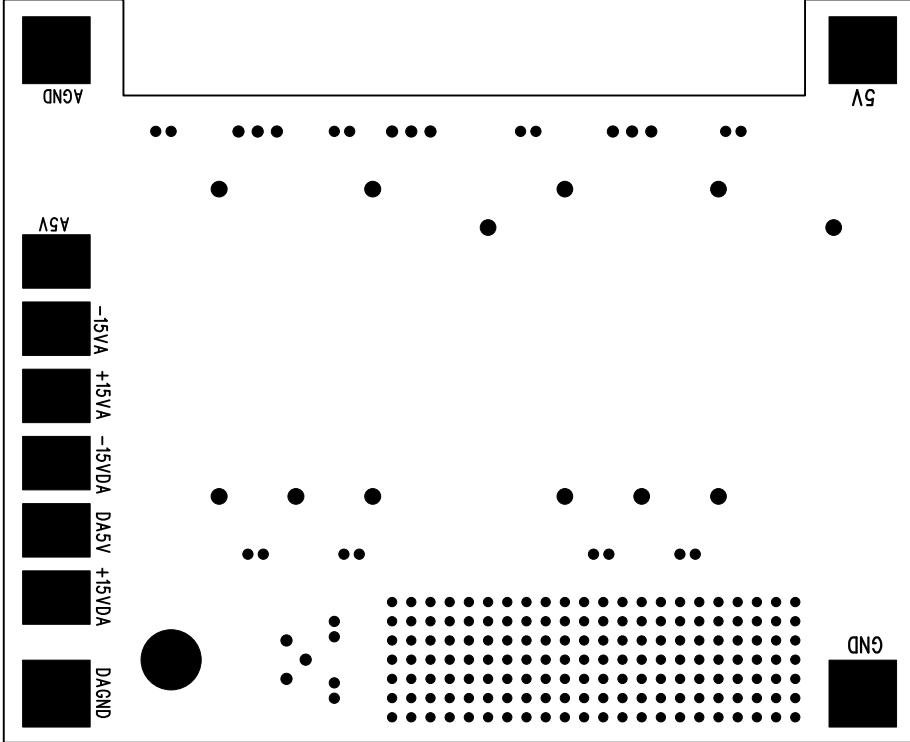


L1 部品面シルク SST0120.PHO
ML00045(RESPONSIVE PROCESSOR Ver1.1 K0 BOARD)三精システム(株) 01'2.9

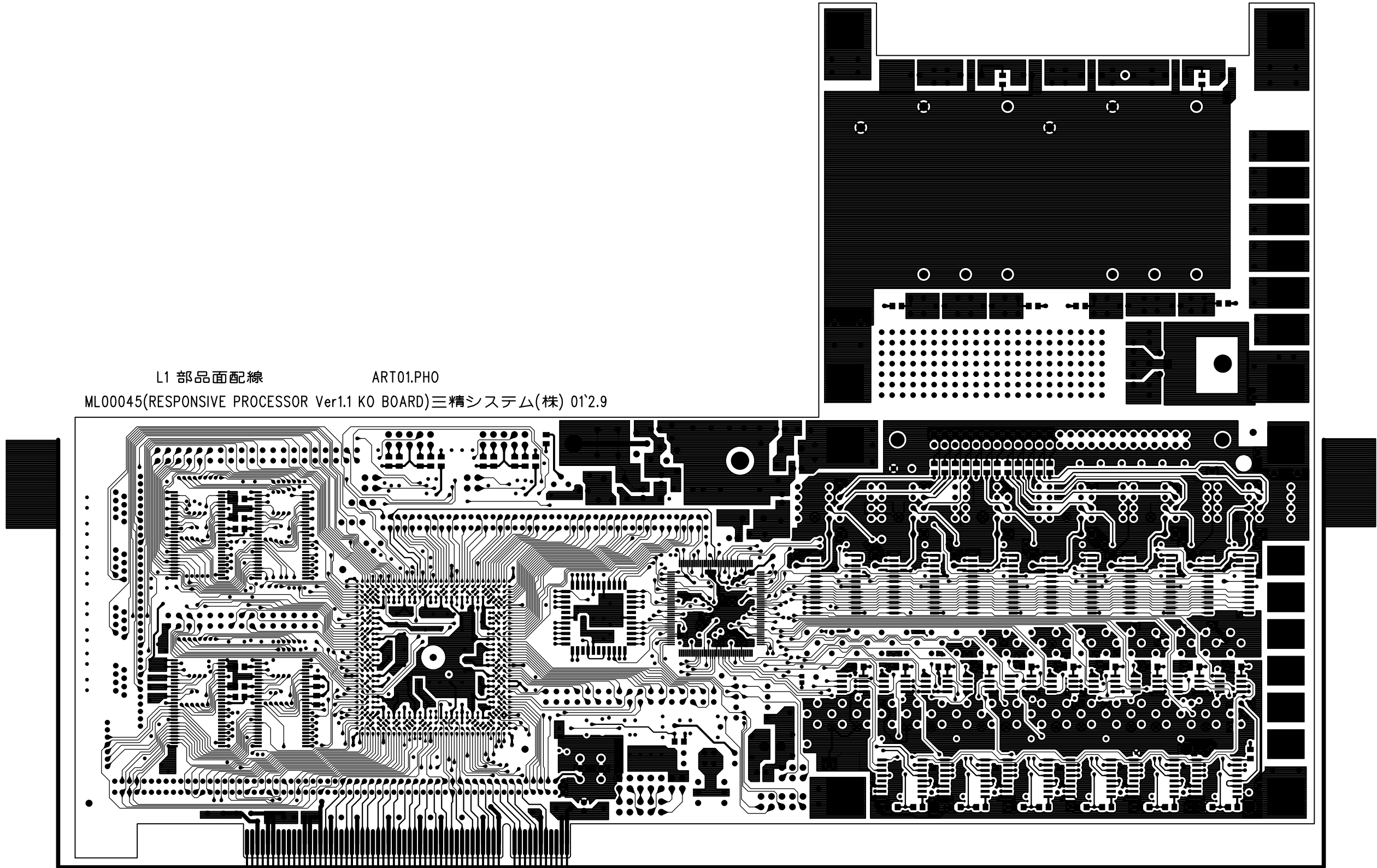


MT0042(RESPONSIVE PROCESSOR Ver1.1 K0 BOARD)三精システム(株) 01.5.9
LE 半田面シロ

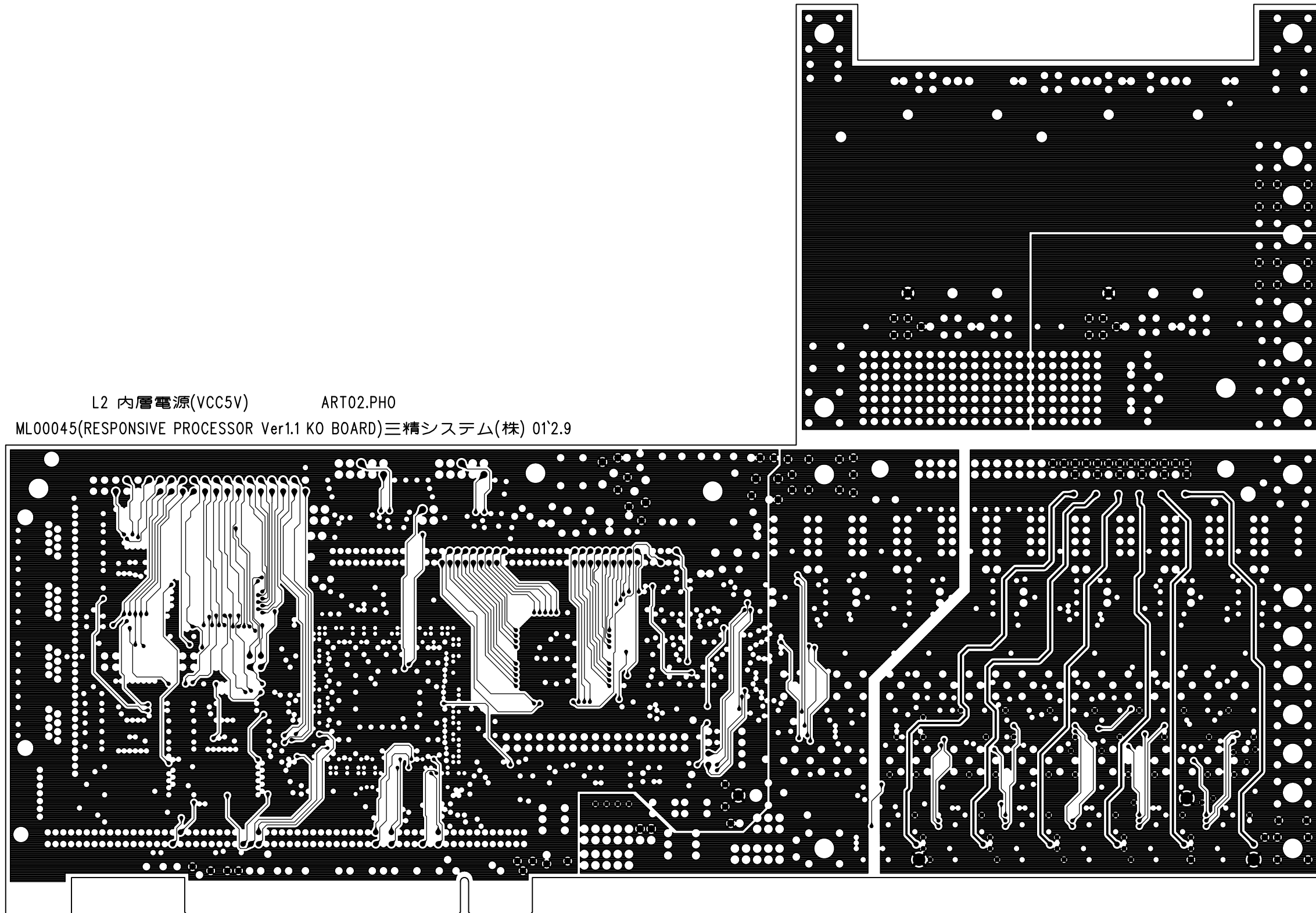
22B0E51PH0



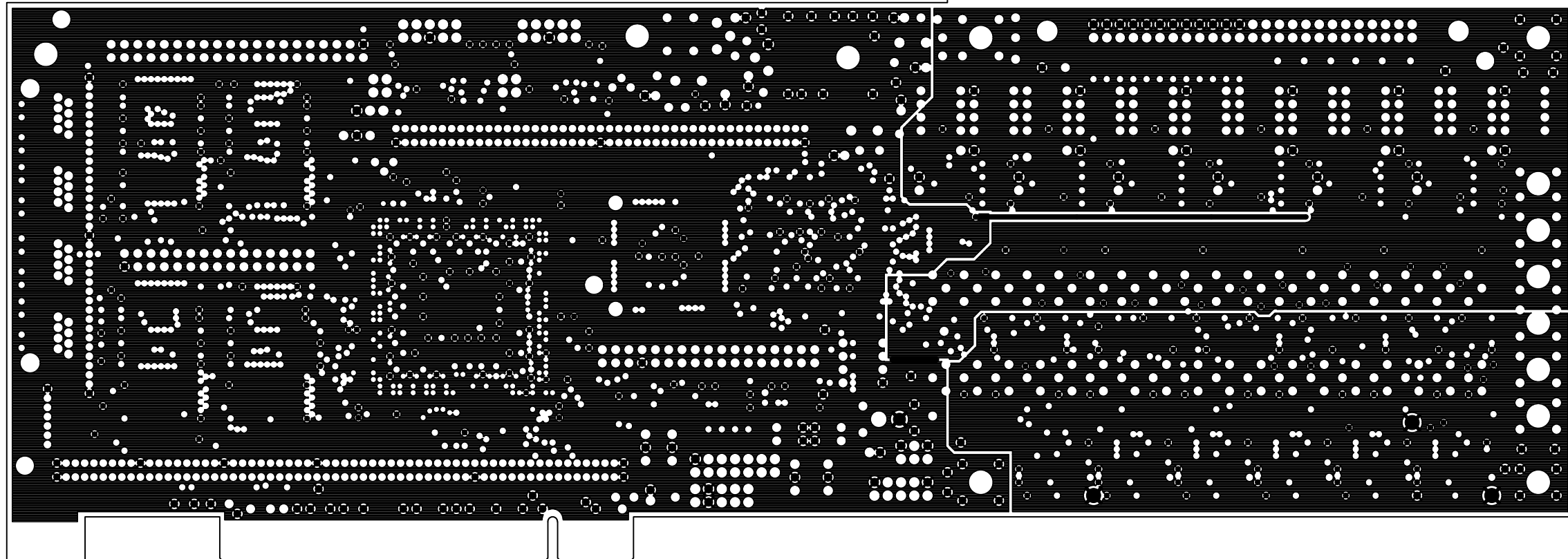
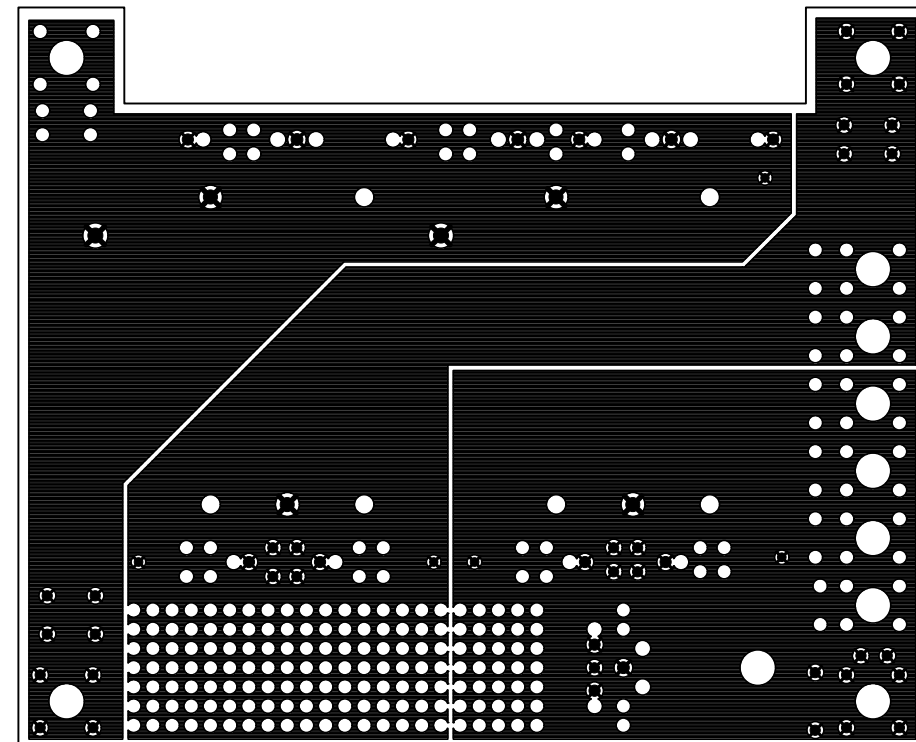
L1 部品面配線 ART01.PHO
ML00045(RESPONSIVE PROCESSOR Ver1.1 K0 BOARD)三精システム(株) 01'2.9



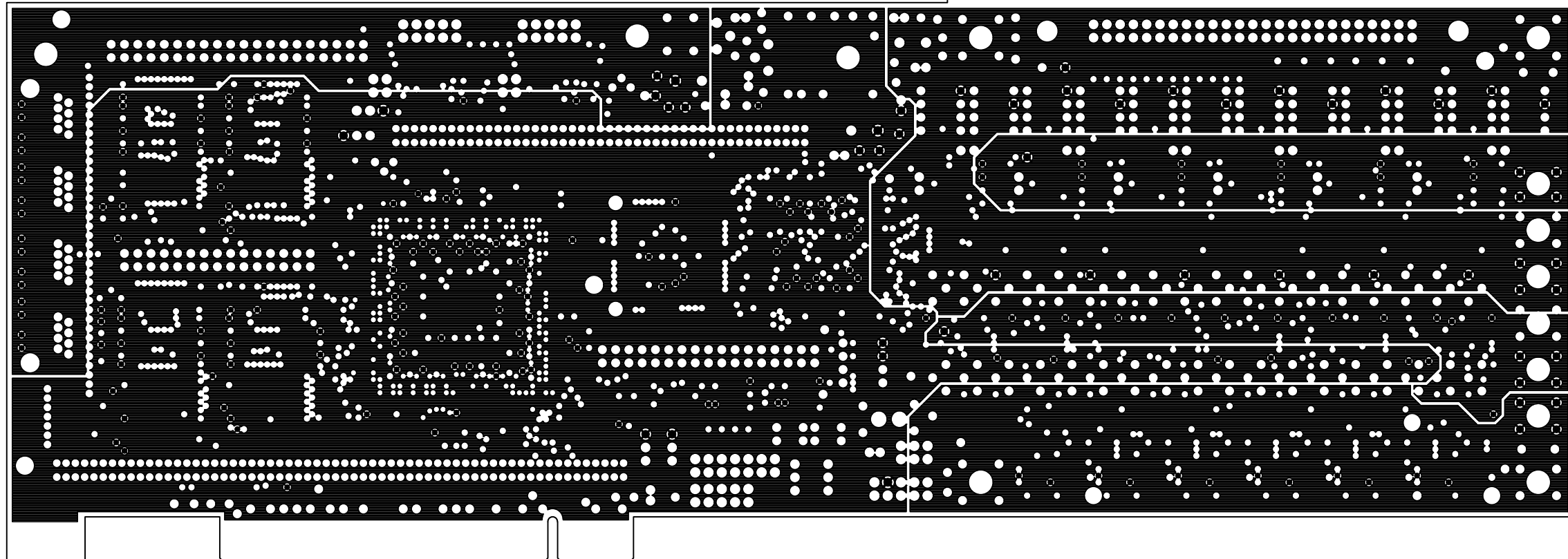
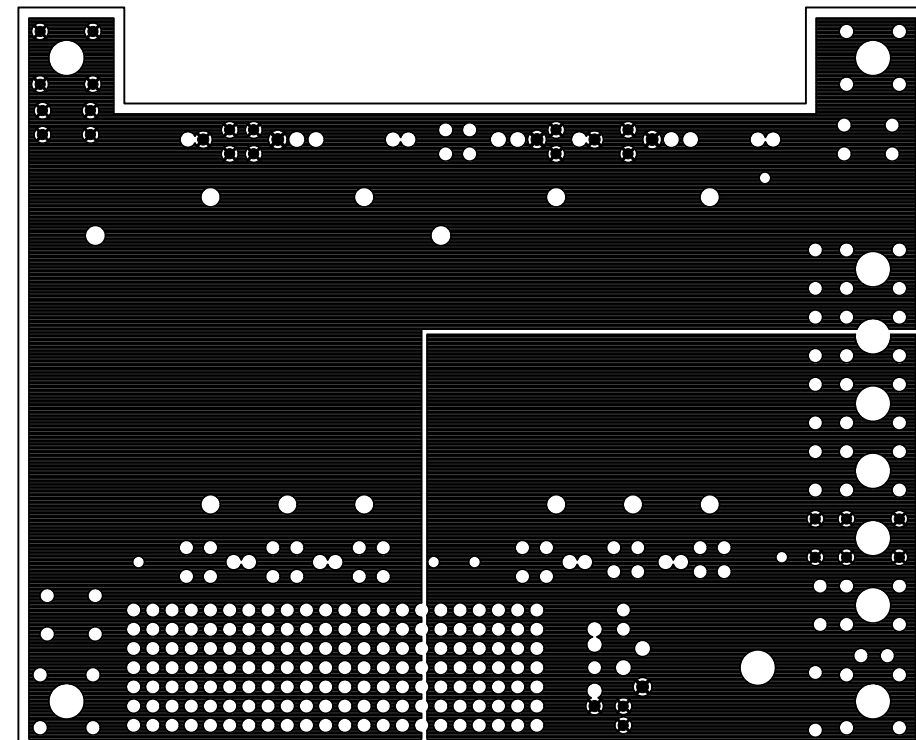
L2 内層電源(VCC5V) ART02.PHO
ML00045(RESPONSIVE PROCESSOR Ver1.1 KO BOARD)三精システム(株) 01'2.9



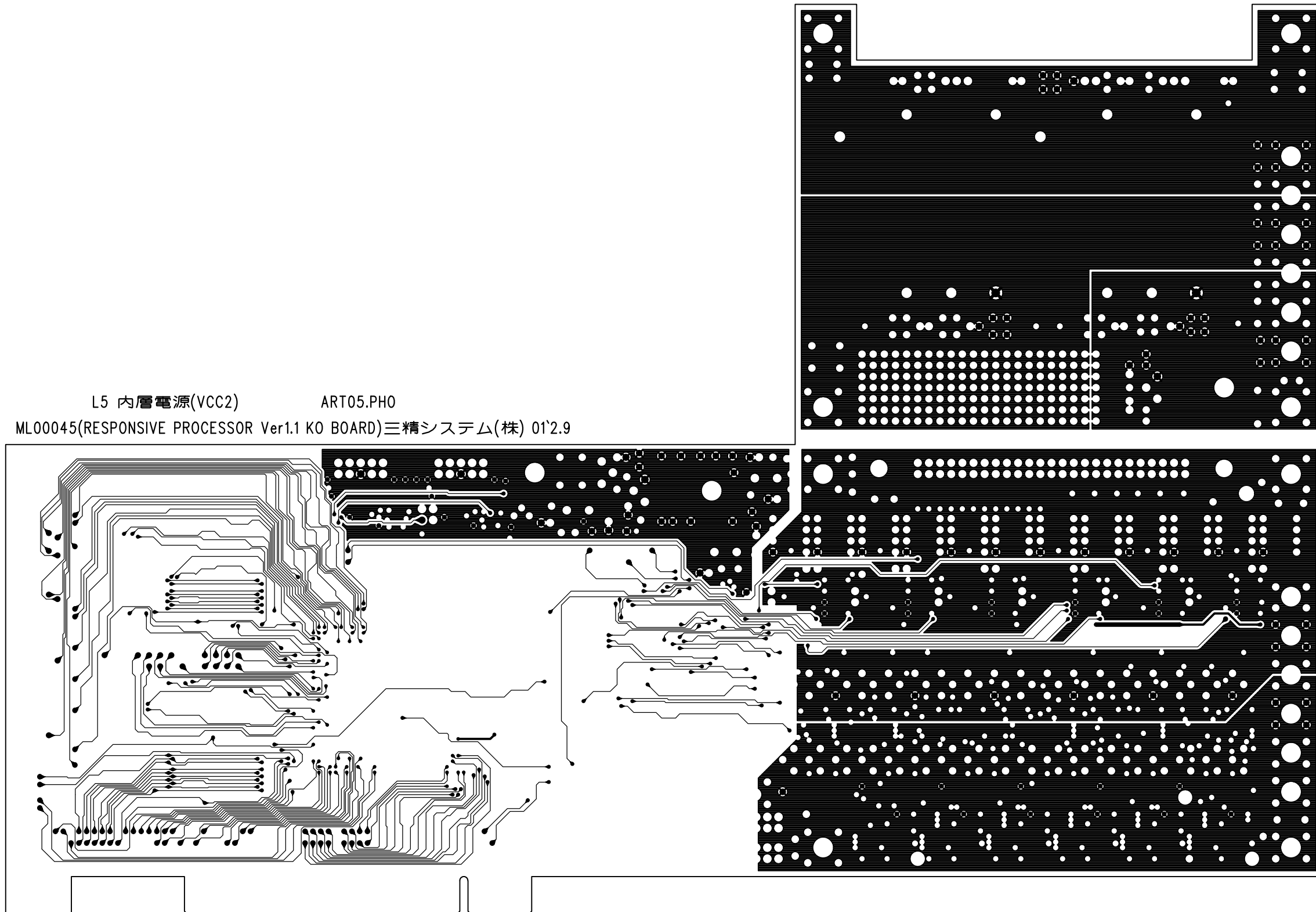
L3 内層電源(GND) ART03.PHO
ML00045(RESPONSIVE PROCESSOR Ver1.1 KO BOARD)三精システム(株) 01'2.9



L4 内層電源(5V VCC) ART04.PHO
ML00045(RESPONSIVE PROCESSOR Ver1.1 KO BOARD)三精システム(株) 01'2.9



L5 内層電源(VCC2) ART05.PHO
ML00045(RESPONSIVE PROCESSOR Ver1.1 KO BOARD)三精システム(株) 01'2.9



L6 半田面配線 ART06.PHO
ML00045(RESPONSIVE PROCESSOR Ver1.1 K0 BOARD)三精システム(株) 01'2.9

