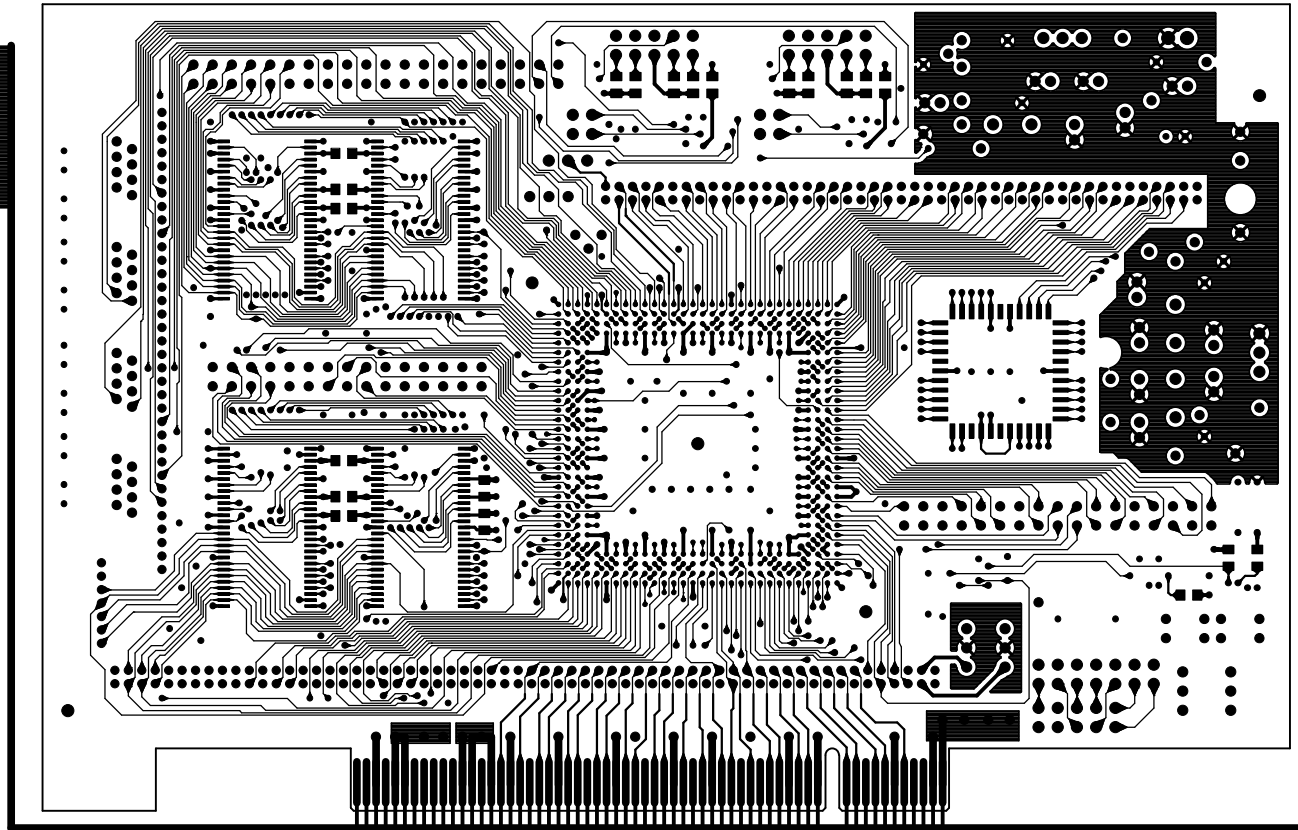


L1 部品面配線

ART01.PHO

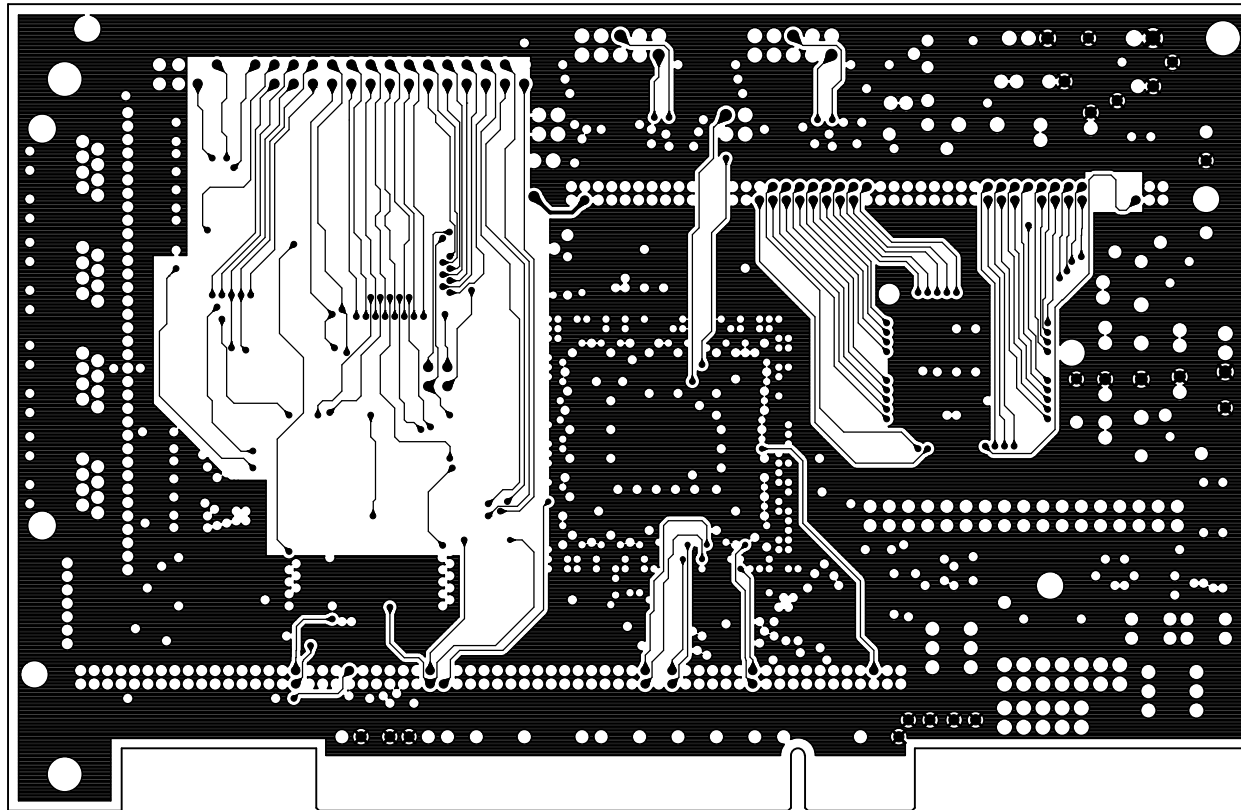
ML00011(RESPONSIVE PROCESSOR Ver3 BOARD)三精システム(株) 00'1.7



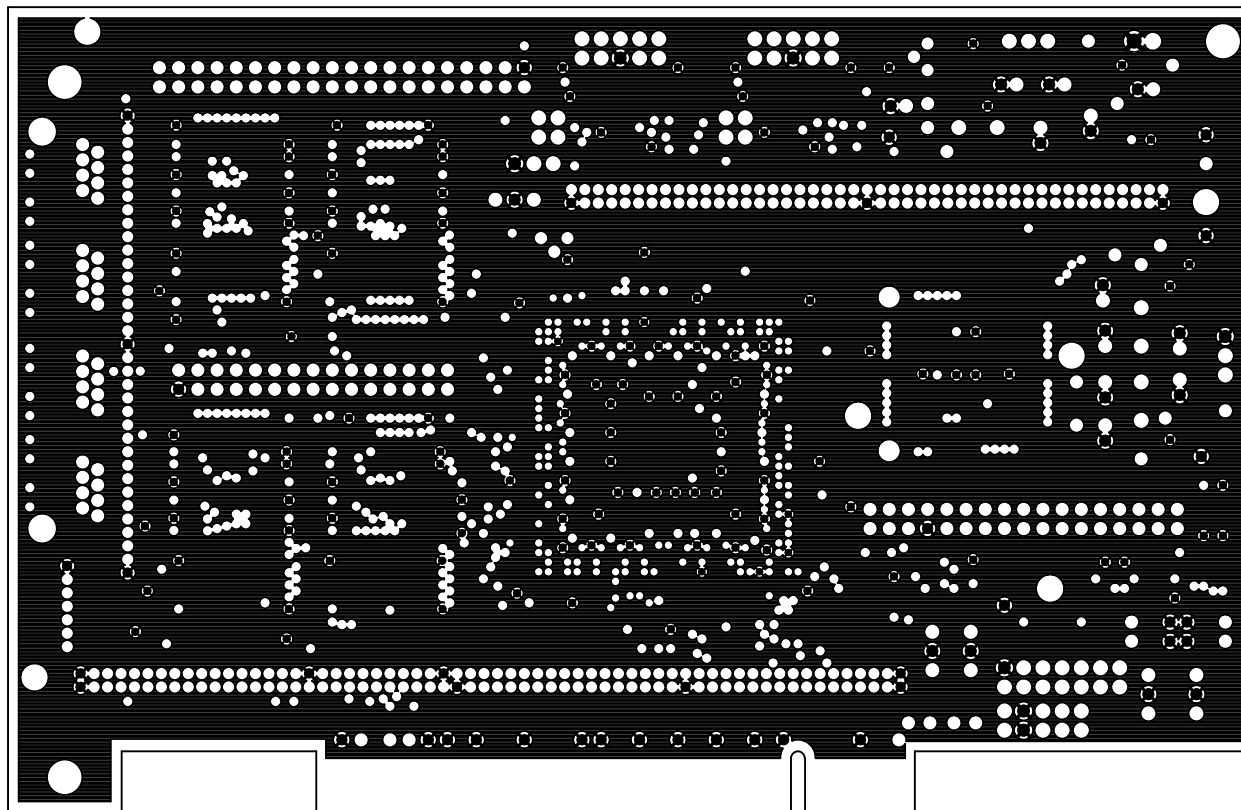
L2 内層電源(VCC5V)

ART02.PH0

ML00011(RESPONSIVE PROCESSOR Ver3 BOARD)三精システム(株) 00`1.7



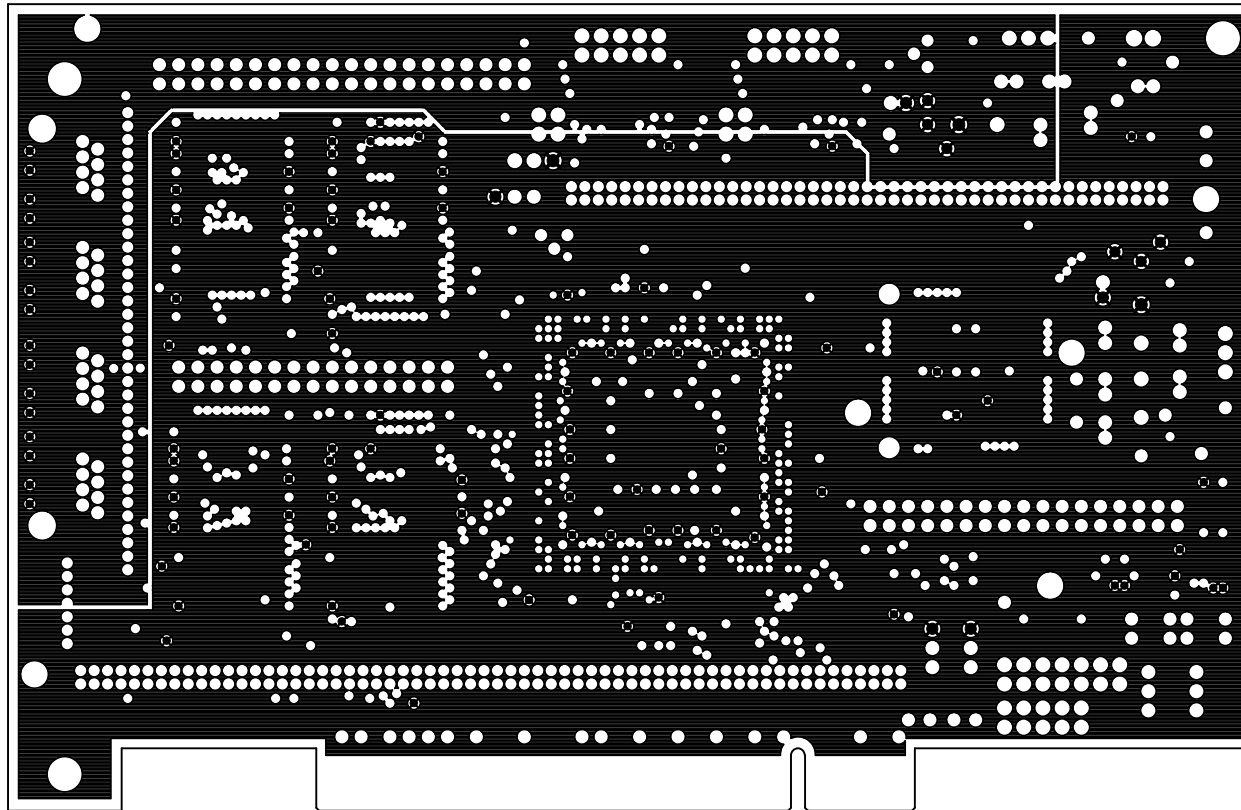
L3 内層電源(GND) ART03.PHO
ML00011(RESPONSIVE PROCESSOR Ver3 BOARD)三精システム(株) 00`1.7



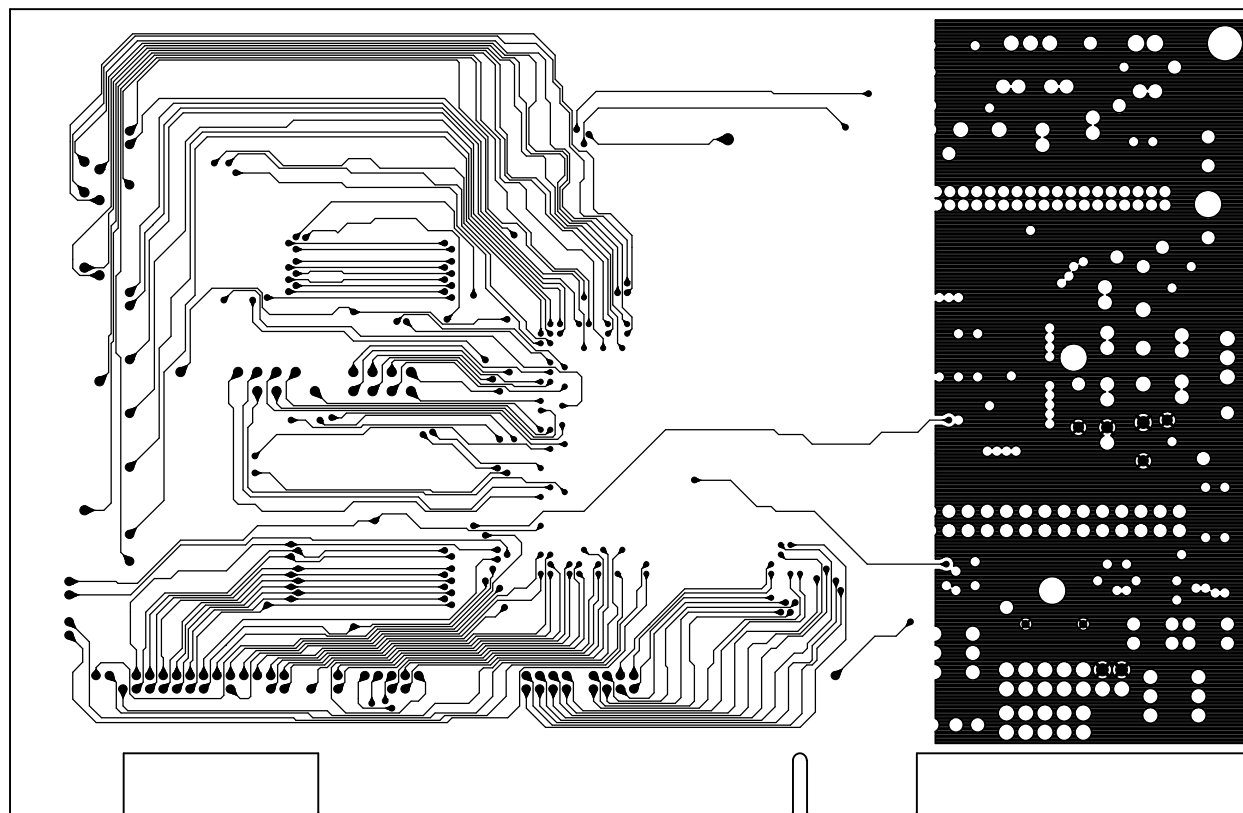
L4 内層電源(VCC VCC2)

ART04.PHO

ML00011(RESPONSIVE PROCESSOR Ver3 BOARD)三精システム(株) 00`1.7



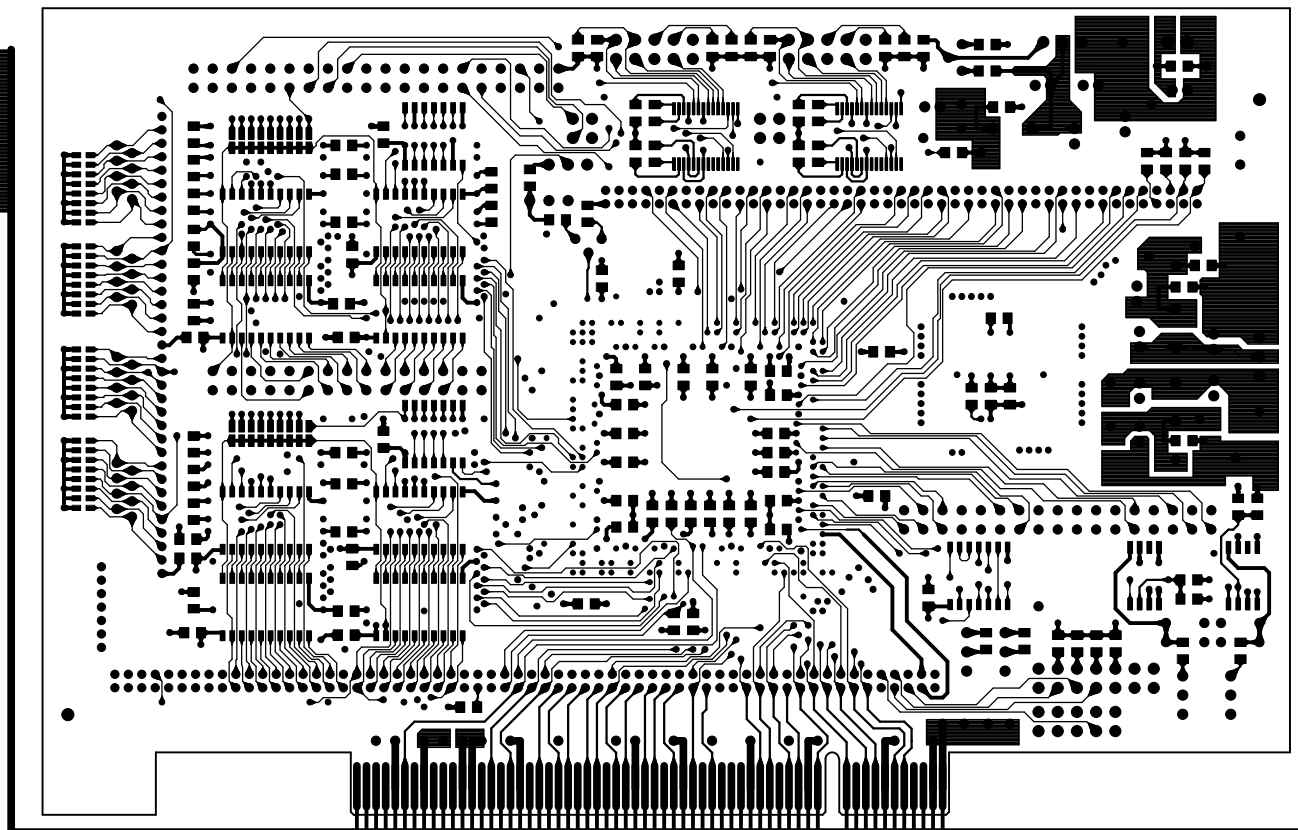
L5 内層電源(5V) ART05.PHO
ML00011(RESPONSIVE PROCESSOR Ver3 BOARD)三精システム(株) 00'1.7



L6 半田面配線

ART06.PHO

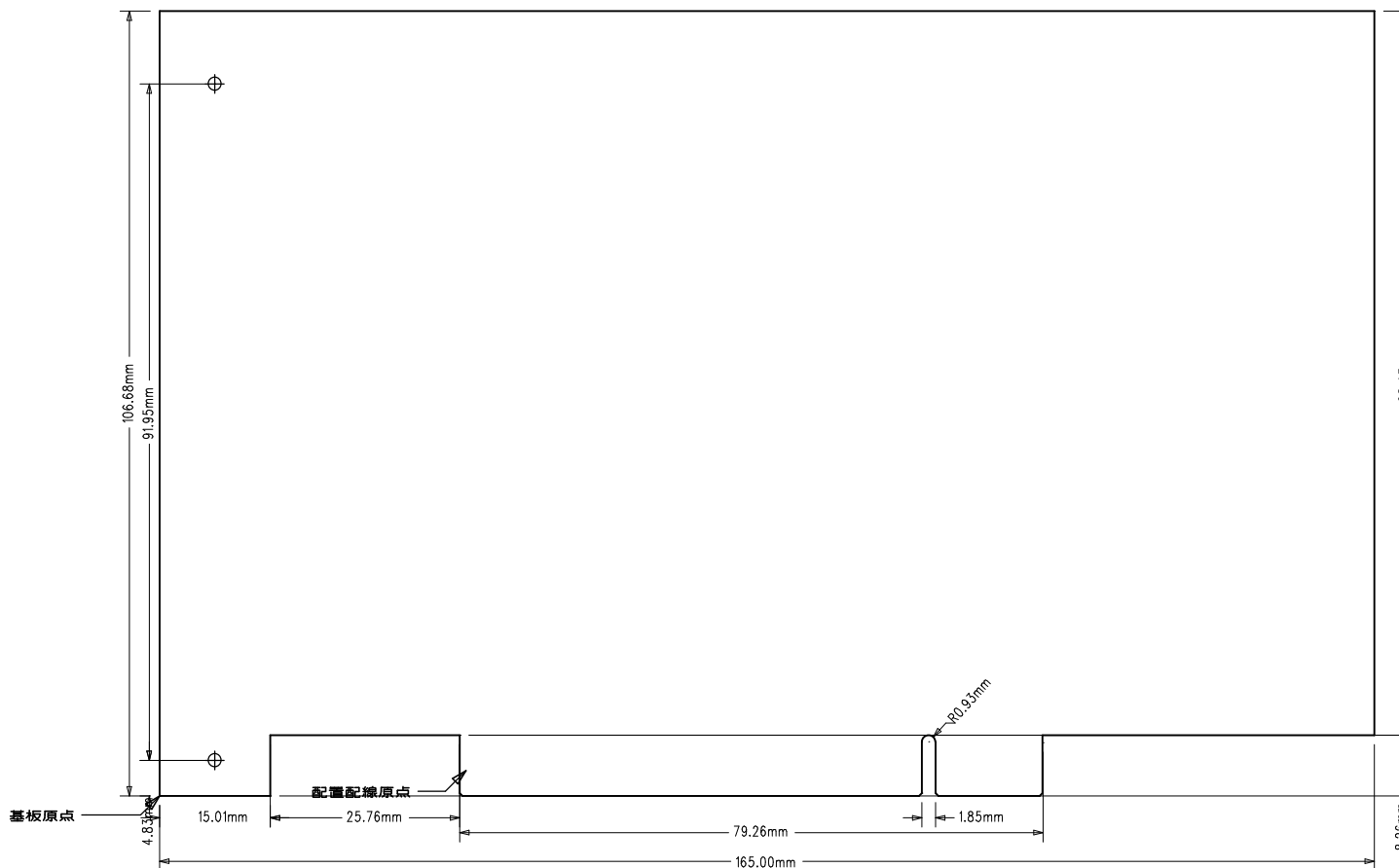
ML00011(RESPONSIVE PROCESSOR Ver3 BOARD)三精システム(株) 00'1.7



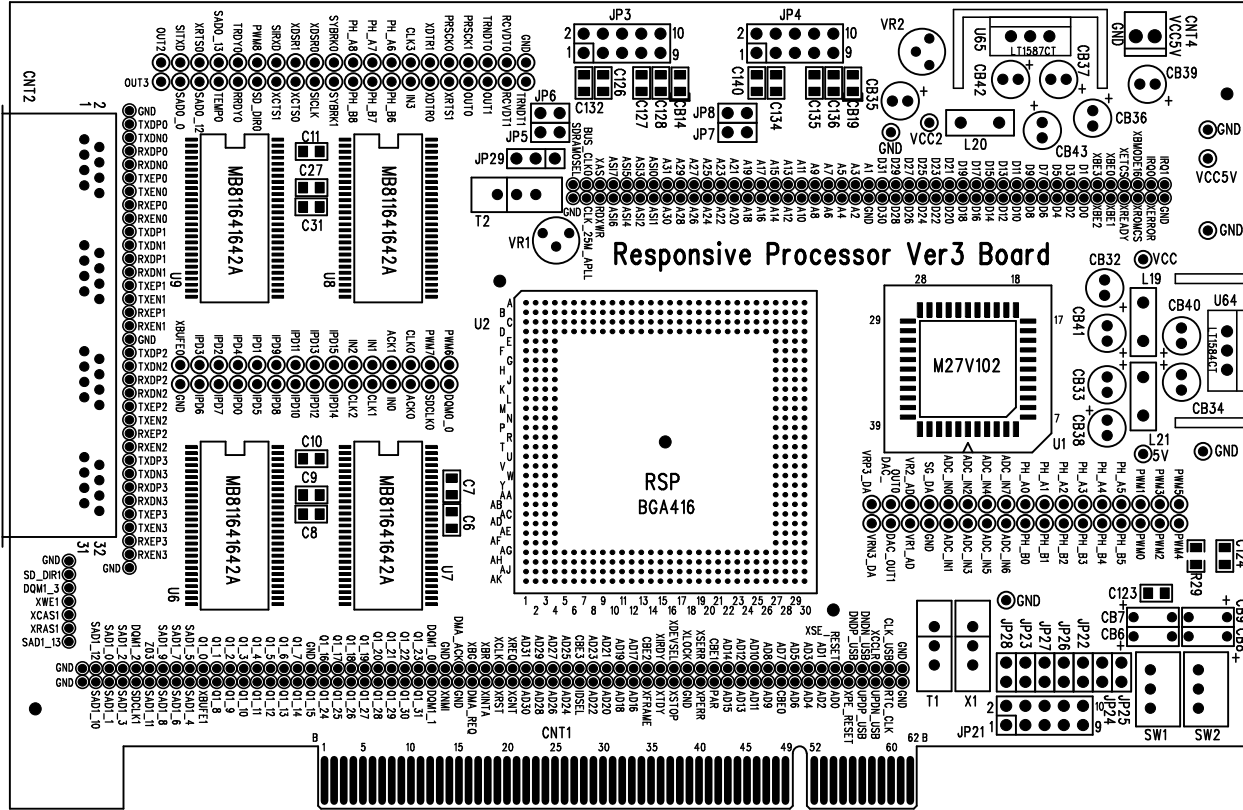
基板外形

GEN0130.PHO

ML00011(RESPONSIVE PROCESSOR Ver3 BOARD)三精システム(株) 00'1.7



L1 部品面シルク SST0120.PHO
 ML00011(RESPONSIVE PROCESSOR Ver3 BOARD)三精システム(株) 00'1.7



ML00011(RESPONSIVE PROCESSOR Ver3 BOARD)三精システム(株) 00.1.7
 Le 半田面シロフ 22B0E51PH0

