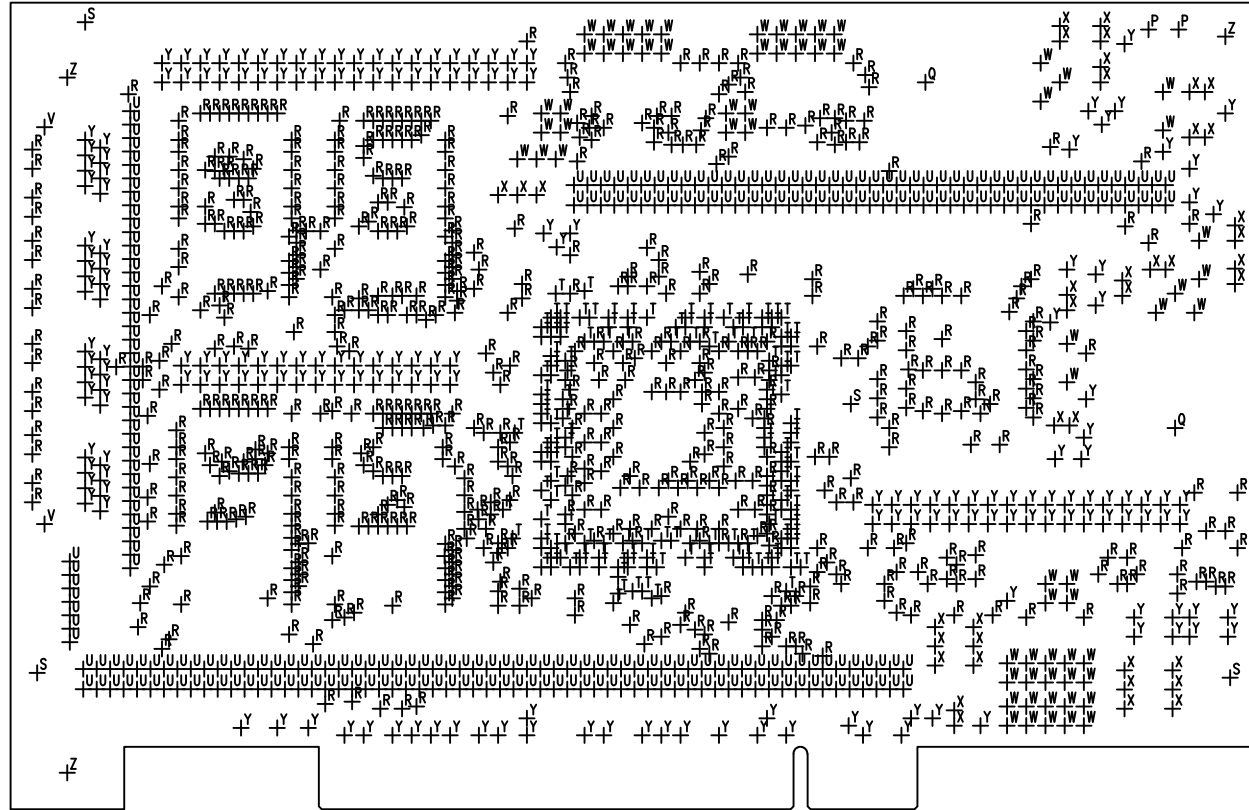


ドリル穴指示図

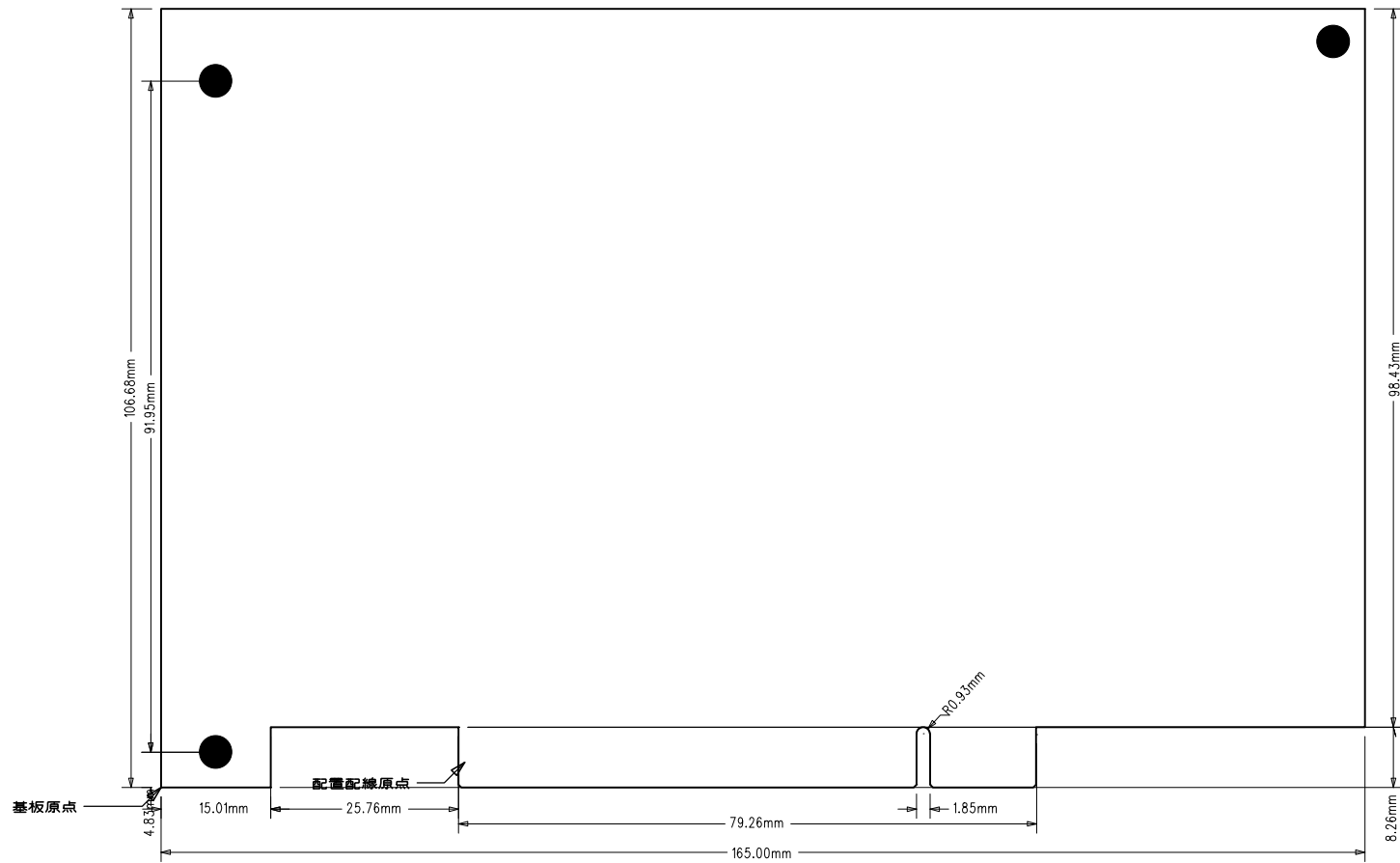
DD0129.PRN

ML00044(RESPONSIVE PROCESSOR Ver4 BOARD)三精システム(株) 00'7.24

| 寸法 | 数量 | 記号 | PLTD |
|-----|-----|----|-------|
| 71 | 2 | P | PLTD |
| 126 | 2 | Q | PLTD |
| 16 | 643 | R | PLTD |
| 98 | 4 | S | NPLTD |
| 12 | 150 | T | PLTD |
| 28 | 256 | U | PLTD |
| 95 | 2 | V | NPLTD |
| 40 | 67 | W | PLTD |
| 36 | 39 | X | PLTD |
| 32 | 194 | Y | PLTD |
| 138 | 3 | Z | NPLTD |



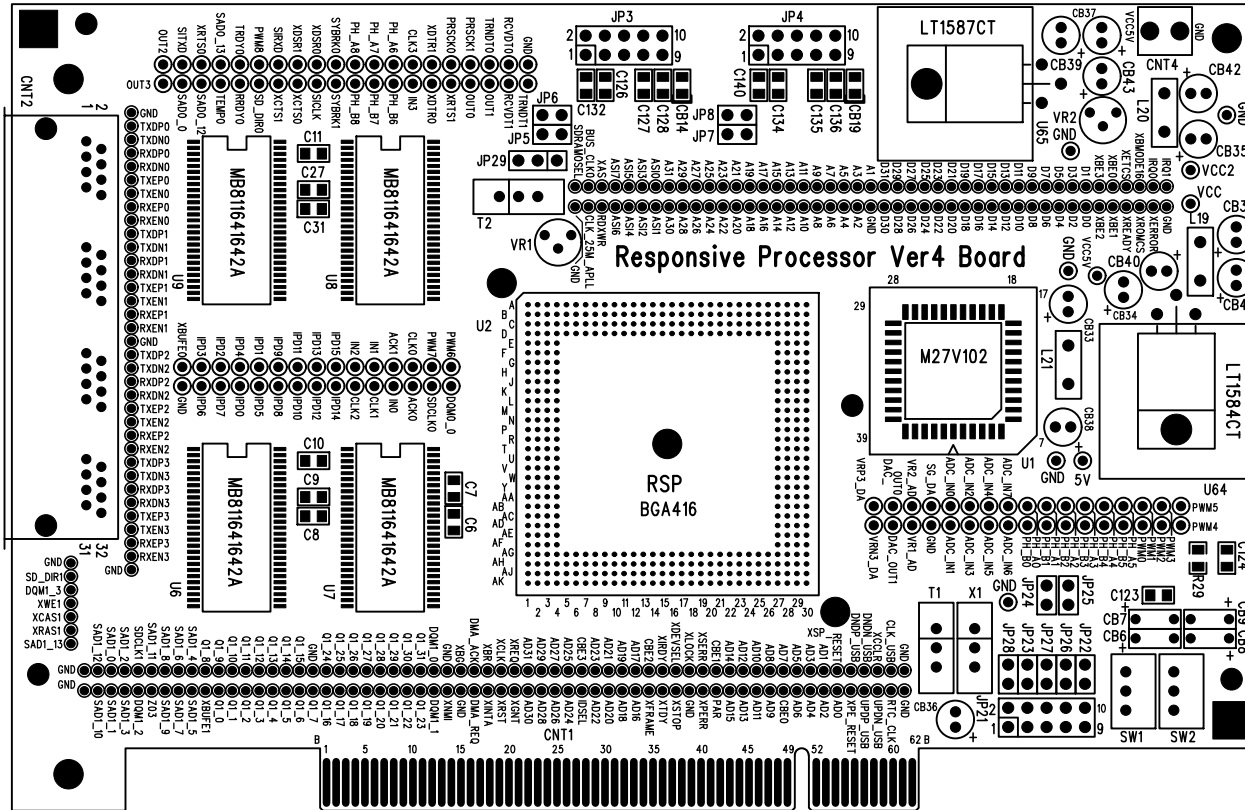
ML00044(RESPONSIVE PROCESSOR Ver4 BOARD)三精システム(株) 00'7.24



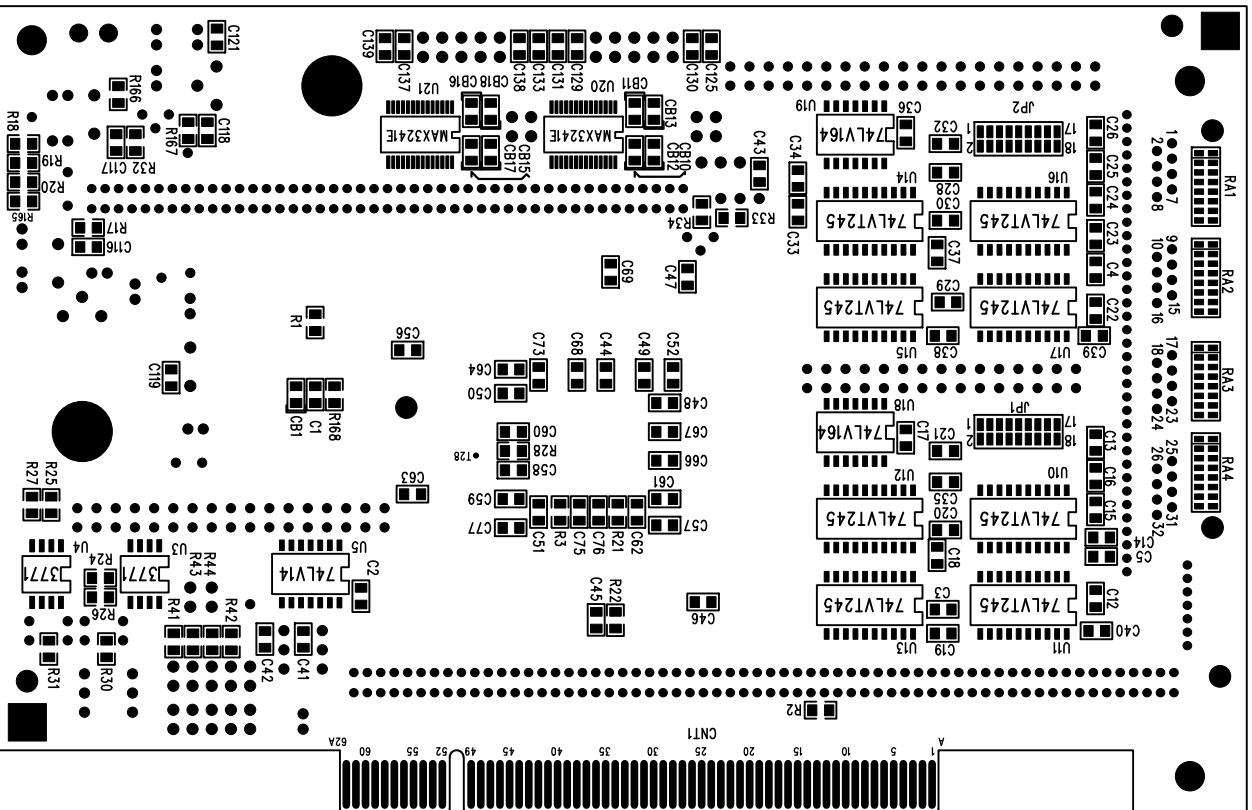
L1 部品面シルク

SST0120.PHO

ML00044(RESPONSIVE PROCESSOR Ver4 BOARD)三精システム(株) 00'7.24



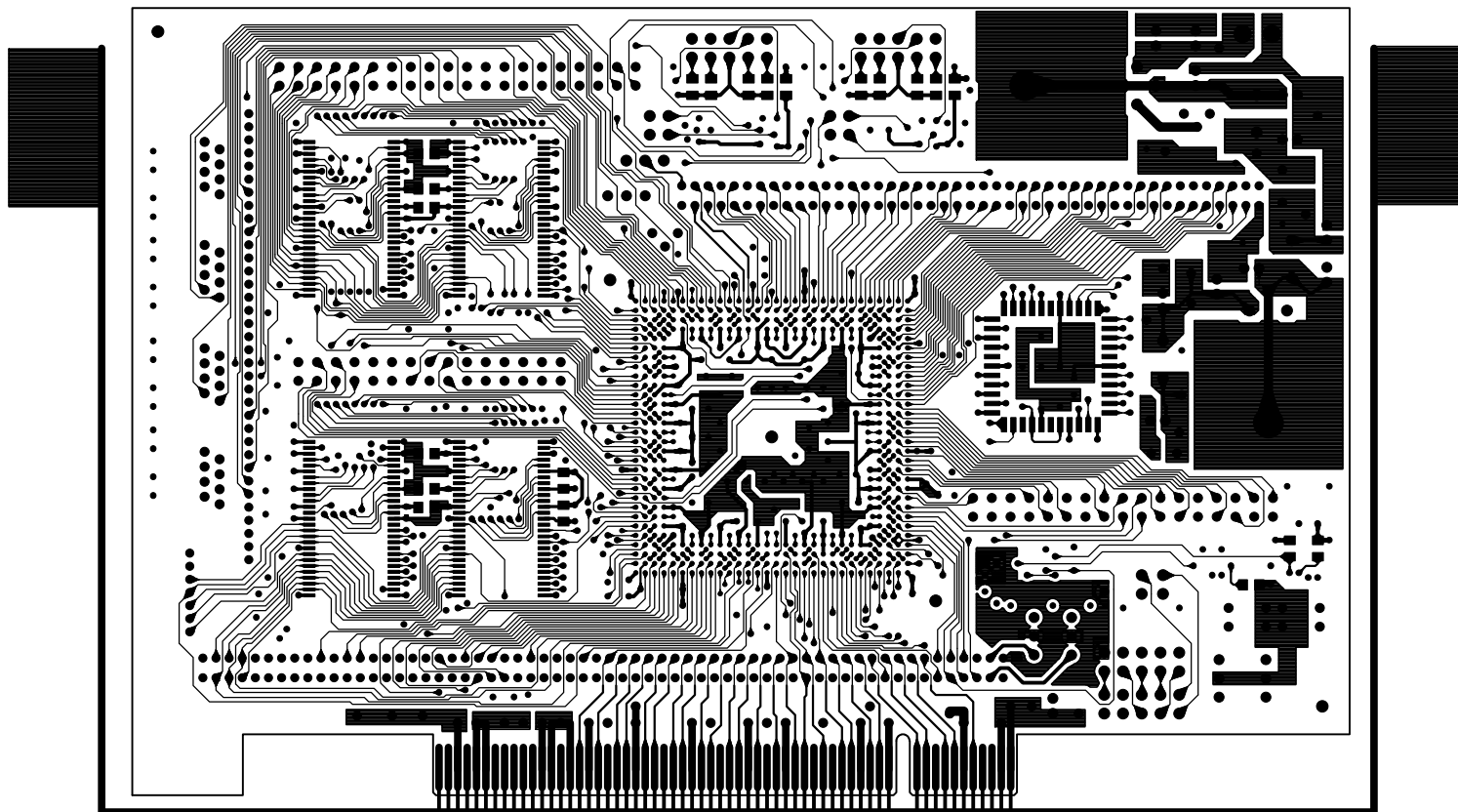
ML0044 (RESPONSIVE PROCESSOR Ver4 BOARD) 三精システム (株) 00.1.24
 Le 半田面シロウ 22B0E51PH0



L1 部品面配線

ART01.PH0

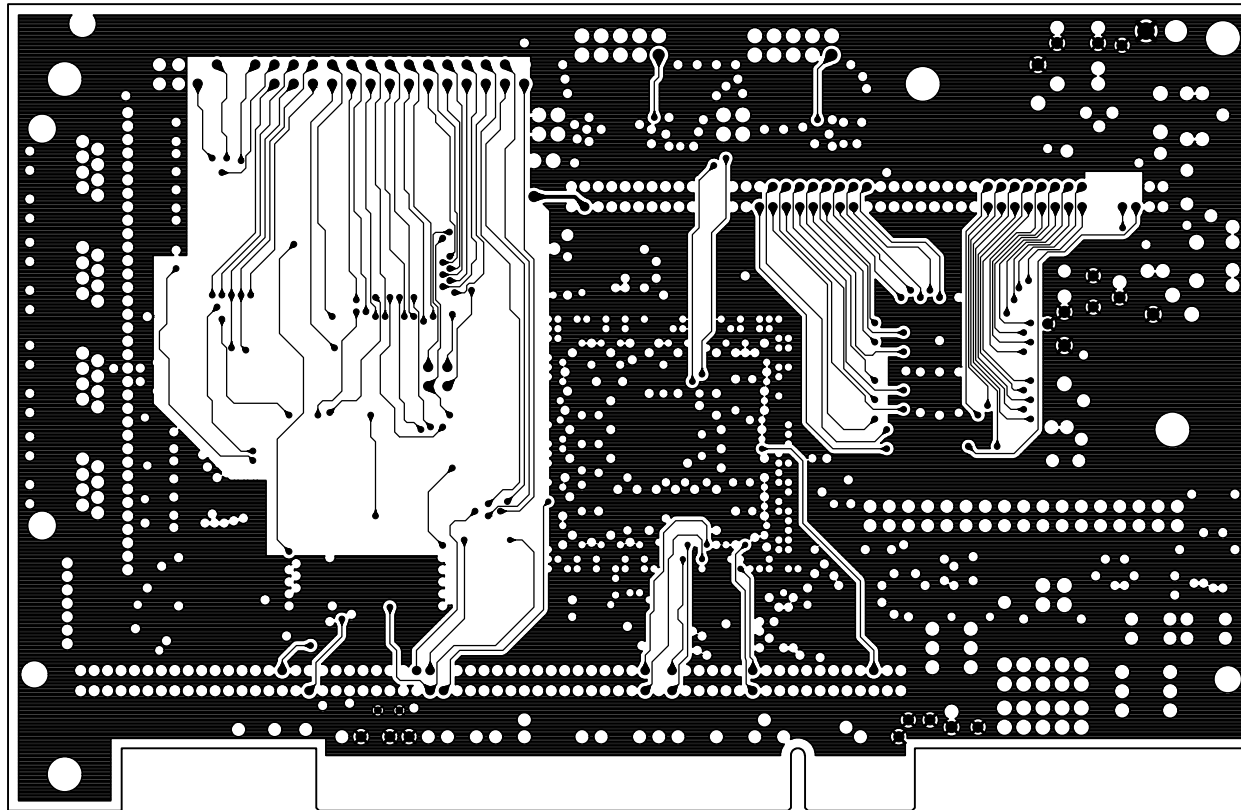
ML00044(RESPONSIVE PROCESSOR Ver4 BOARD)三精システム(株) 00'7.24



L2 内層電源(VCC5V)

ART02.PHO

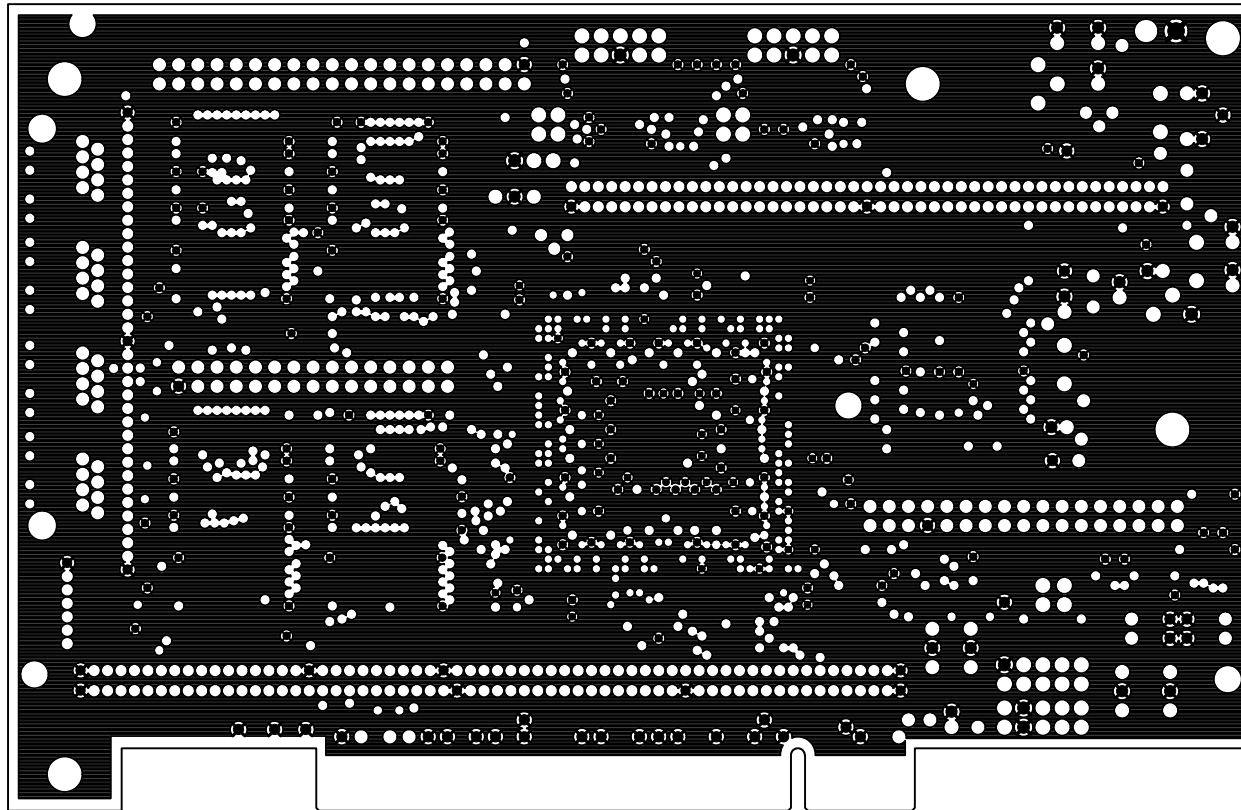
ML00044(RESPONSIVE PROCESSOR Ver4 BOARD)三精システム(株) 00'7.24



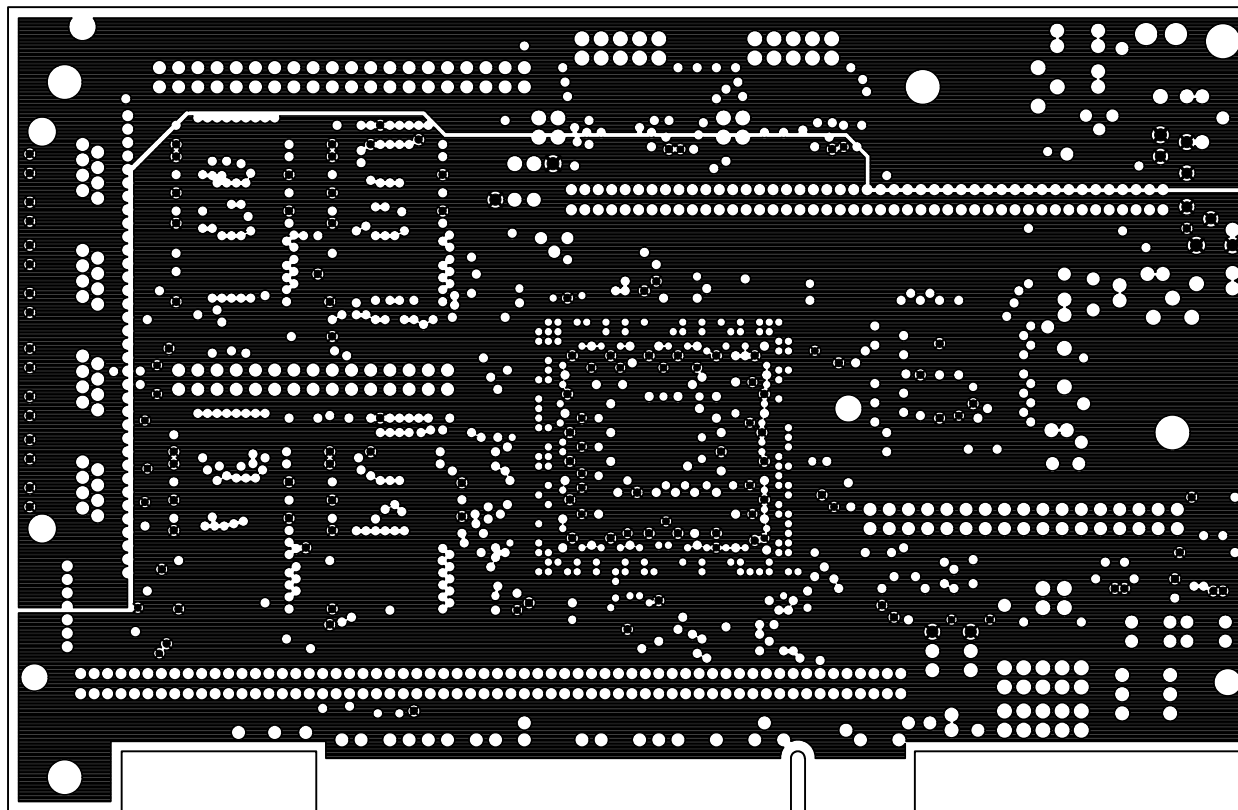
L3 内層電源(GND)

ART03.PHO

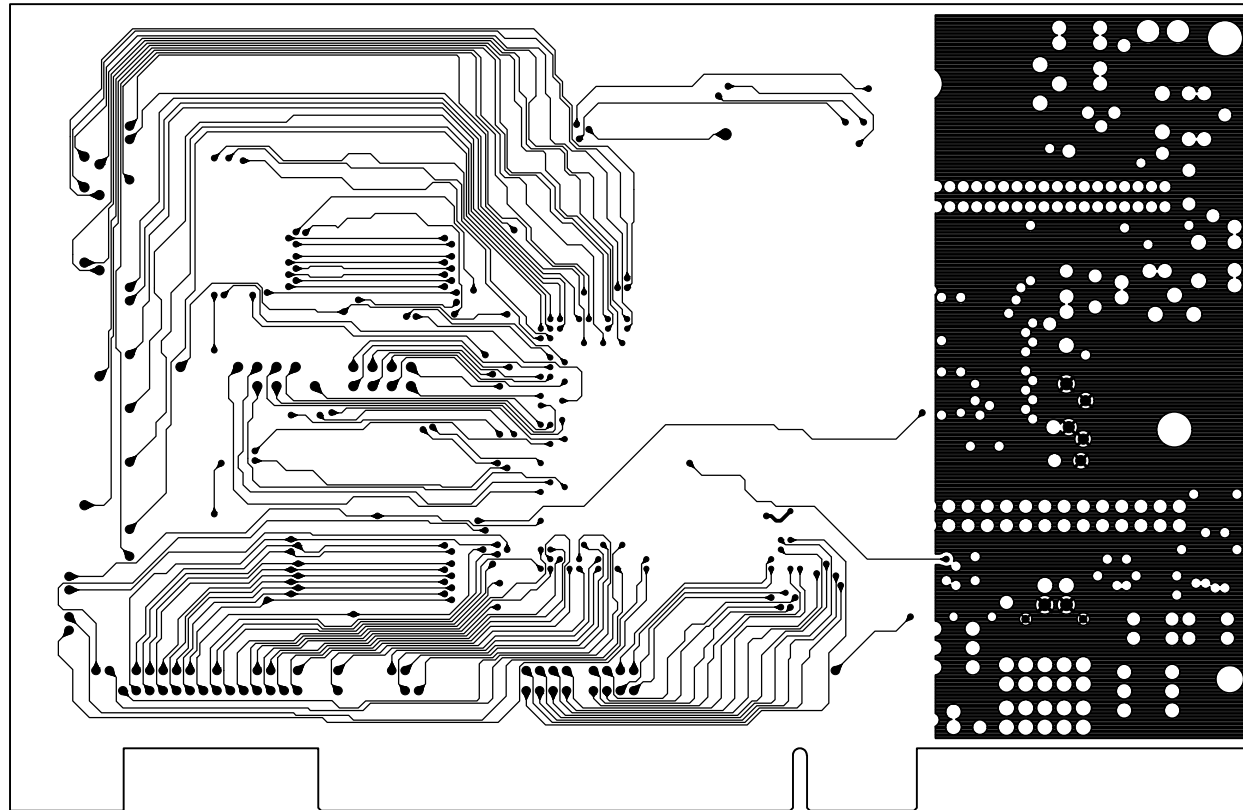
ML00044(RESPONSIVE PROCESSOR Ver4 BOARD)三精システム(株) 00'7.24



L4 内層電源(VCC VCC2) ART04.PHO
ML00044(RESPONSIVE PROCESSOR Ver4 BOARD)三精システム(株) 00'7.24



L5 内層電源(5V) ART05.PHO
ML00044(RESPONSIVE PROCESSOR Ver4 BOARD)三精システム(株) 00'7.24



L6 半田面配線

ART06.PHO

ML00044(RESPONSIVE PROCESSOR Ver4 BOARD)三精システム(株) 00'7.24

